



MedCruise NEWS

issue 58

September 2019



PORTS
TOGETHER

#CruiseTheMed

www.medcruise.com
www.medcruise.cn

54th MedCruise GA in Kusadasi



Hosted by MedCruise members Ege Ports Kusadasi and Global Ports Holding, the 54th MedCruise General Assembly has established itself as a major cruise event in the Mediterranean and its adjoining seas.

Kusadasi (Turkey), the gateway to Ephesus, was for a week the capital of the cruise industry worldwide hosting the 54th MedCruise General Assembly, May 7th -10th. More than 140 delegates from MedCruise port and associate members, cruise lines executives, international press representatives and local authorities gathered together to discuss the latest trends in the industry and develop synergies towards sustainable cruise services.

Latest tasks developed by the Board of Directors and the four Working Groups regarding the cooperation among ports and destinations, the new edition of the Professional Development Course, the new marketing plan, the North Africa and Black Sea regions promotion actions, the cruise-industry events participation, the European Union affairs, new projects and studies, sustainability and environment, cooperation with other Associations, and source markets analysis were discussed during the Internal Matters Session.

During the session Trends in the Med, MedCruise members along with cruise line executives and international press representatives had the chance to discuss in detail about the cruise industry latest developments. Itinerary planning and deployment, ship repair and maintenance, the luxury market, port operations and cruise activities in the East Med were also discussed and analysed in the plenary sessions.

In line with the MedCruise tradition, all port and associate members had a first-class opportunity to enjoy sessions of B2B-meetings with cruise line executives and international press representatives.

MedCruise attendees had a busy 4-day schedule which kicked off with a press conference and welcome reception. Highlight of the event was the gala dinner at the Celsus Library in Ephesus, where guests had once in a lifetime experience at the breath-taking

atmosphere of Ephesus. Farewell dinner took place at the castle in Pigeon Island overlooking Ege Port Kuşadası and the beautiful view of the town. Three shore excursions were available in which guests had a chance to discover various attractions in Kuşadası such as Ephesus, Şirince Village, Priene and Cave of Zeus.

Airam Diaz, President of Medcruise Association said: "We are honoured to be hosted by our beloved members Ege Port Kuaşdası and Global Ports Holding. Our prestigious Association, as a key member of the industry, is committed to the new opportunities and challenges that are to come. MedCruise members, which handled more than 28 million cruise passenger movements in 2018 for first time in our Association's history, are contributing at the sustainable growth of the cruise industry during this bright period."

Aziz Gungor, General Manager of Ege Port Kuaşdası and Bodrum Cruise Port said:

"Ege Port Kuşadası is proud to have hosted this key event and having had the opportunity of welcoming the Association to Kuşadası, Turkey as the region regains its popularity. It has been a fruitful event, bringing together key industry stakeholders to discuss the cruise industry in the region. This event has allowed us to proudly showcase our destination, which is gateway to the Ephesus, to our esteemed guests."

Emre Sayın, CEO Global Ports Holding said: "We are delighted to work alongside MedCruise to promote cruise trips in the Mediterranean region as we share a common mission. The event has been a successful instance of bringing the industry together to discuss challenges and themes, as well as developing friendships between those that are passionate about the region. As operator of the hosting port we were happy to showcase our commitment and operational expertise to all visitors."

Ege Port Kuşadası, operated by Global Ports Holding, was an excellent host to all the guests, who enjoyed a spectacular time in Kuşadası and are looking forward to meeting again in the 55th General Assembly that will take place in Antibes (France) next October.



Welcome Reception, Gardens by the Sea



Panel discussion about Port Operations



Wonders of the ancient World: Priene, Meletus and Didyma



B2B meetings with Cruise Line executives



Zeljka Cimic, Scenic Luxury Cruises and Nicky Guerrero BoD Director of events



Panel discussion about Trends in the Med



Welcome Reception, MedCruise member with Press representatives



Kusadasi cruise technical Port visit



Farewell Dinner at the Pigeon Island



MedCruise President, Airam Diaz, welcoming members to Kusadasi



Farewell Dinner at the Pigeon Island



Gala Dinner at Celcus Library, Ephesus



Panel discussion about Itinerary, Planning and Deployment



B2B meetings with Cruise Line executives and press representatives



Board of Directors at 54th MedCruise General Assembly



Farewell Dinner at the Pigeon Island



Emre Sayin, Chief Executive Officer, Global Ports Holding welcoming participants to Kusadasi

#54MedCruiseGA
#PortsTogether
#WeAreSocial

First edition of MedCruise Awards held in Genoa



Award Categories and Winners

- Cruise Line Executive showing the greatest commitment during the 52nd MedCruise General Assembly held in La Valletta - Captain Luigi Pastena, VP Port Operations, MSC Cruises
- Cruise Line Executive showing the greatest commitment during the 54th MedCruise General Assembly held in Kusadasi - Marcus Puttich, Head of Port & Ground Operations, TUI Cruises
- Best Port from the West Med Region of MedCruise - Barcelona
- Best Port from the Adriatic Sea Region of MedCruise - Dubrovnik
- Best Port from the East Med Region of MedCruise - Piraeus
- Best Port from the Black Sea Region of MedCruise - Odessa
- Associate Member with the Most Efficient Shorex Agent and tour operator - Inter cruises
- Associate Member with the Most Efficient Port Agent - Cemar
- Associate Member with the Most Efficient Cruise Terminal - DP World Limassol
- Associate Member with the Most Proactive Tourist Board/Municipality - Var Provence
- Award for the Best Cruise Industry article - Seatrade Cruise Review
- Lifetime Recognition Award - Giovanni Spadoni
- Award for the Cruise Line with the Highest Number of Calls in all the MedCruise Regions - MSC Cruises
- Award for the Cruise Line Group/Holding with Highest Number of Calls in all the MedCruise Regions - Carnival Cruise Line
- Award for the Luxury Cruise Line with the Highest Number of Calls in all the MedCruise Regions - Viking Ocean Cruises
- Award for the Cruise Line with the Greatest Commitment to the East Med Region - Celestyal Cruises
- Award for the Cruise Line with the Greatest Investment and Commitment to the Environment and Sustainability - AIDA Cruises
- Award for the Cruise Line with the Greatest Charity Program - Costa Cruises
- Award for the Cruise Line with the Highest Attendance in MedCruise General Assemblies - Royal Caribbean

The first edition of the MedCruise Awards took place on June 25th, 2019 in Genoa. This major cruise event was proudly hosted by our founding member, Port of Genoa, today managed by Western Ligurian Sea Port Authority, in a city that offers premier cruise business opportunities in the heart of the Mediterranean Sea.

The MedCruise Awards brought together MedCruise members and their partners as well as our invited guests –cruise line executives and international press representatives- and aimed to recognise companies, organisations and individuals who are working harder to promote the sustainable growth of the cruise activities in the Mediterranean and its adjoining seas.

The first edition of the MedCruise Awards integrated several categories with different juries composed by cruise industry experts, where some prizes were given based on jury members' opinion and others based on facts.



AIDA Cruises representative, Roberto Ferrarini with MedCruise President



1st Edition of the MedCruise Awards in the city-port of Genoa



Inter cruises representative, Eleanora Prata with MedCruise Vice President



TUI Cruises representative, Marcus Puttich with MedCruise BoD Member



MedCruise Awards guests



1st Edition of the MedCruise Awards



MedCruise Awards guests



2nd MedCruise President, Fabbio Capoccia and current President, Airam Diaz



Grandiose 16th-century Palazzo Doria Tursi building



MSC Cruises representative, Capt. Luigi Pastena with MedCruise BoD member



1st Edition of the MedCruise Awards



MedCruise Awards guests



1st Edition of the MedCruise Awards



MedCruise Awards guests



Ceremonial Room with neo-classical decoration

MedCruise Diary 2019

London International Shipping Week
9-13 September



Seatrade Europe, Hamburg
11-13 September



Sustainable Shipping and Ports Forum, Copenhagen
25-26 September



55th MedCruise GA, Antibes Juan-les-Pins
1-4 October



Seatrade Cruise Asia Pacific, Shanghai
9-11 October



Italian Cruise Day, Cagliari
18 October



INTERNATIONAL CRUISE DAY

International Cruise Summit, Madrid
27-28 November



MedCruise members

ALANYA
ASHDOD
AZORES
BALEARIC ISLANDS
BARCELONA
BASTIA/NORTH CORSICA
BURGAS
CABO VERDE PORTS
CANARIAN PORTS
CARTAGENA
CASTELLON
CENTRAL ADRIATIC SEA
CENTRAL-NORTHERN TYRRHENIAN SEA
CENTRAL TYRRHENIAN SEA
CEUTA
CONSTANTA
CORFU
COSTA BRAVA CRUISE PORTS
CYPRUS PORTS
DUBROVNIK, KORCULA
EASTERN LIGURIAN SEA
EASTERN SICILIAN SEA
EGYPTIAN PORTS
FRENCH RIVIERA PORTS
GIBRALTAR
GIOIA TAURO
HERAKLION
HUELVA
IGOUMENITSA
IONIAN SEA
ISTANBUL
KAVALA
KOPER
KOTOR
KUSADASI/ANTALYA/BODRUM
LEIXÕES

LISBON
LIVORNO 2000
MADEIRA PORTS
MALAGA
MARSEILLE
MONACO
MOTRIL-GRANADA
NORTH TYRRHENIAN SEA
ODESSA
PATRAS
PIRAEUS
PORTIMAO
PORTOFINO
RIJEKA
SARDINIAN SEA
SETE
SIBENIK
SOUDA/CHANIA
SOUTHERN ADRIATIC SEA
SPLIT
THE STRAIT
TANGIER
TARRAGONA
TENERIFE PORTS
THESSALONIKI
TOULON-VAR PROVENCE
TRABZON
TUNISIAN PORTS
VALENCIA
VALLETTA
VARNA
VENICE
VOLOS
WESTERN LIGURIAN SEA
WESTERN SICILIAN SEA
ZADAR

Associate members

ALFASHIP
ALGERIA CRUISE SERVICES
CEMAR
CEUTA TOURISM
COUNCIL OF SANT CARLES DE LA RAPITA
COUNTY P. A. OF DUBROVNIK
CRUISE SERVICES MONACO
DP WORLD LIMASSOL
INTERCRUISES SHORESIDE & PORT SERVICES
KVARNER COUNTY TOURISM OFFICE
KYRIAKIS TRAVEL S.A.
LA GOULETTE CRUISE TERMINAL
LANZAROTE TOURISM
MEDOV SRL
MH BLAND

MMS
PATRONAT DE TURISME COSTA BRAVA
PENINSULA TOURS
PEREZ Y CIA
PUERTOS DEL ESTADO
SALAMIS ORGANISATION
SAMER & CO SHIPPING
SCANDINAVIAN NEAR EAST AGENCY
SEAWAY SHIPPING & TOURIST SERVICES
TENERIFE TOURISM BOARD
TERMINAL NAPOLI SPA
TRAINOSE
TRANSCOMA CRUISE & TRAVEL
TURA TURIZM
TURISME DE BARCELONA
VAR PROVENCE CRUISE CLUB

Azores

2020 is looking to be a successful year for the ports of the Azores, as 190,000 passengers are expected, with 175 calls already booked. There are also 18 maiden calls planned at the three ports of Ponta Delgada, Praia da Vitória and Horta.

Fire Lake and Furnas Valley is one of the best selling shorex available when calling at Ponta Delgada. An opportunity to visit the dormant volcanos, one of them with calderas, gardens and hot springs, amongst other interesting attractions. Furnas Valley is the most exotic of the scenarios on the island, with geiser and thermal pools.

The Twin Lakes at Sete Cidades is another best seller. Passengers have the opportunity to visit the west side of the island and the Massif

of Sete Cidades, where volcanic craters give rise to numerous lakes such as Empadadas, Santiago Lake and the iconic blue and green waters of Sete Cidades Lake.

A new addition to cruising in the Azores is the conclusion of the work at São Jorge Island main port of Velas which can accommodate small/medium sized cruise ships up to 220mtr in length, ideal for expedition ships.

Other improvements include work to improve Ponta Delgada's commercial pier to better accommodate ships that berth outside the cruise terminal.

MedCruise contact: André Velho Cabral Moura
amoura@portosdosacores.pt



Barcelona



Penedès

For 2020, 3.3m passengers on 830 cruise calls are expected into the port of Barcelona, where Carnival's newest cruise terminal, Helix, opened last year. The port is working towards improving traffic flow on the Adossat Quay to guarantee more efficient passenger mobility.

The top must-see destinations from the port are: Modernista heritage, including UNESCO World Heritage buildings such as Sagrada Família Temple, Park Güell, Casa Batlló, La Pedrera and Colonia Güell; the Gothic Quarter; Montserrat Monastery; and Penedès Region

Wine and Cava Cellars. Penedès region, located just 30 minutes from Barcelona, is blessed with wonderful beaches and protected by mountains in the interior, and has a remarkable landscape characterised by endless vineyards dotted with country houses, unique historical sites and a host of wineries that have made the Penedès region internationally famous.

Penedès is home to more than 80 wineries, most of them family-owned for generations, where one can experience first-hand the great Mediterranean lifestyle. Tasting wines is just the beginning: find the most authentic wine tours, indulge yourself with brunches or picnics with local products, get in touch with nature just walking or cycling along vineyard trails and discover why this is the homeland of cava.

MedCruise contact: Mar Perez
mar.perez@portdebarcelona.cat

Burgas



Nessebar

In Burgas tourists can see the Historical Museum, the Archaeological Museum and the Natural History Museum. Close to the city is the UNESCO World Heritage town of Nessebar, the ancient Sozopol, the architectural and historical reserves of Brashlian and Zheravna, Saint Anastasia Island and the archaeological complex Aqua Khalide.

Archaeological research has revealed ancient settlement mounds from the Neolithic, ruins from the Roman cities, Byzantine and medieval castles, churches and monasteries.

South of Burgas is Strandja mountain. In an area of 116,000 hectares is situated Strandja Nature Park, the largest protected area in Bulgaria. In the park there are five nature reserves, 14 protected areas and many natural landmarks. There are 54 species of mammals and 261 species of birds in the park.

Strandja Nature Park is recognised as one of the most interesting oases of rare species and habitats on the Balkan Peninsula and in the European Union. There are preserved plant species from the Tertiary era, when Europe was covered with glaciers and all the lush vegetation died. The Nature Park team offers guides for various walking and eco-routes.

Whilst there are no definite bookings for cruise calls to port of Burgas for 2020, the ports of Burgas, Varna, Constanta, Odessa, Trabzon and Istanbul have started to implement a plan for the return of cruise ships to the Black Sea region. The group held meetings and a presentation at Seatrade Cruise Global 2019 to try and encourage cruise lines to bring ships to the region.

MedCruise contact: Stoicho Dimov
st_dimov@port-burgas.com



Cartagena

170 ships are due to call at Port of Cartagena in 2020, bringing over 270,000 passengers. This is a growth of about 4% on the previous year.

There are a whole host of adventure and active tours available from port of Cartagena including Cycling Cartagena's castle routes, Horseback riding in Calblanque Protected Nature Reserve, Scuba diving in Cabo de Palos and Islas Hormigas and Kayaking in La Manga del Mar Menor.

Cartagena is a major military naval base in the Mediterranean, holding all the submarines of the Spanish Navy. Given its past, the great military influence is visible in all the castle and batteries that surround the coast of the city, and what better way to visit castles such as Fajardo or Atalayas, than by bike on a stunning cycle climb! For easier flat cycling tours, a visit to the San Pedro Salt Marshes Regional Park to enjoy the fauna and great natural value of the area.

Calblanque is the most important nature reserve of the area. From the cove of Cala Reona, in Cabo de Palos, to the mining town of Portmán, you can enjoy cliffs, sandy beaches,



dunes, coves and saltwater marshes all on a horseback riding tour.

Enjoy diving in the small fishing town of Cabo de Palos, just 30km from Cartagena. Covering an area of 2,000 hectares, this marine reserve provides a home to unique flora and fauna. The Isla Hormigas Marine Reserve is a natural protected area, home of many famous shipwrecks.

La Manga is a strip of land 22km long, separating the Mediterranean Sea from the Mar Menor saltwater lagoon. Practice sea kayaking and take a quick swim!

MedCruise contact: Hortensia Sanchez
hortensia@apc.es

Castellon

A new dedicated cruise pier by the city waterfront was inaugurated by Crystal Esprit last May. 160mtr in length and 8mtr draught it is ideal for smaller luxury ships. Visitors are able to walk to the town and enjoy the leisure facilities located in the area, restaurants, cinemas, cafés, beach club, spa facilities, etc.

Two new lines have called Castellón this year, Oceania Cruises and Marella Cruises. Together with Crystal Cruises a total of five calls and approximately 5,500 passengers will shape up the cruise map in Castellón at the end of 2019, comparing to figures from last year with just one call and 500 passengers show a significant step.

MedCruise contact: Susana Soria
soria@fundacionportcastello.com



Central Adriatic Ports Authority-Port of Ancona

For the 2019 season, 92,100 passengers are expected to call the port of Ancona, this is an increase of 37% on 2018 numbers, and numbers for 2020 are currently the same for 2019.

MSC Cruises has 28 calls, and 71,400 passengers in 2019 and Marella Cruises has nearly 19,700 passengers calling on two ships, Celebration and Explorer 2.

The main destinations from the Port of Ancona are the city centre and its rich historic and artistic heritage, while in the area of Marche Region, the Frasassi Caves and the city of Urbino are the most attractive sites.

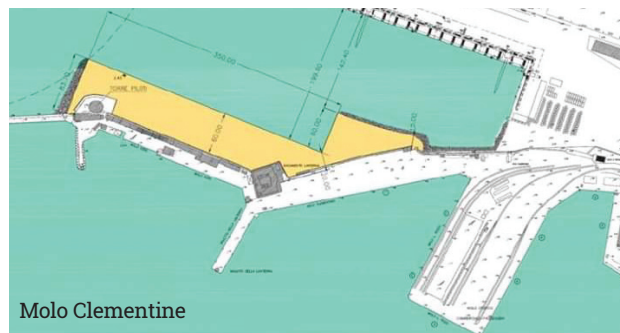
The Frasassi Cave complex is one of the world's most grandiose and fascinating subterranean passageways. It is an extensive itinerary along which a surreal landscape

unfolds, along a tourist itinerary and two speleo-adventure paths.

The small hill town of Urbino experienced a great cultural flowering in the 15th century, becoming one of the main centres of the Renaissance and is now a UNESCO world heritage site.

In 2019, the Central Adriatic Port Authority concluded the first planning phase for the new cruise terminal, located on the northern side of the port, in a strategic area close to the Old Port and the city centre.

The new terminal area will be nearly 28,000sq mtr, with a 350mtr long quay and services for passengers.



The expected investment is €22m and the terminal is expected to be ready in five years.

MedCruise contact: Guido Vettorel
vettorel@porto.ancona.it

Cabo Verde ports

Ports of Cabo Verde (ENAPOR) are investing €30m in the construction of Cabo Verde's first cruise terminal, in the city of Mindelo, on the island of São Vicente. The main focus for the port organisation is to promote the region of Macaronesia as an attractive destination for cruise tourism.

The construction of the cruise terminal will have a direct impact on the economy of the country. The terminal will include one berth of 400mtr length and 11mtr depth, another berth of 450mtr length and 9.5mtr depth, a 12mtr wide pier, passenger station, tourist village, real estate zone and car park. Work started in June and is

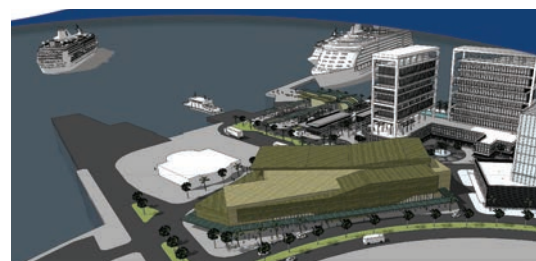
due to be completed by October 2020.

The ports of Cabo Verde are expecting 62 cruise calls to the nine ports of Porto Grande, Porto da Praia, Porto da Palmeria, Porto de Sal-Rei, Porto Novo, Porto de Tarrafal, Porto Vale de Cavaleiros, Porto Ingles and Porto de Furna in 2020. One of the highlights is the call of MSC Cruises' MSC Musica to Porto Grande.

Each of the islands that make up the archipelago of Cabo Verde have a particular attractiveness that identifies them, providing visitors with historical sites, beautiful beaches, mountain excursions,

and the taste of local gastronomy.

MedCruise contact: Gilson Cruz
Gilson.cruz@enapor.cv



Port Authority of Central Tyrrhenian Sea

The Port of Napoli, which is one of three ports belonging to the Port Network Authority of the Central Tyrrhenian Sea (the other two are Salerno and Castellammare di Stabia), has played a strategic role in the organisation of the Napoli 2019 30th Summer Universiade.

The Summer Universiade is a multi-sport event comprised of university students from all over the world, second only to the Olympic Games. The Port of Napoli hosted 4,400 athletes accommodated on two cruise ships moored at Molo Angioino.

Porto Aperto 2019 is a day designed to involve citizens by telling them about the three main ports of the Campania region, Naples, Salerno and Castellammare di Stabia. A celebratory day was organised in each port. Conferences, guided tours of the three ports, and entertainment was put on. This year the Porto Aperto events in Campania were held together with other initiatives in Italian ports, thanks to Italian Port Days initiative launched by the Italian Ports Association (Assoport).

MedCruise contact: Barbara Casolla
b.casolla@porto.napoli.it



Port of Castellammare di Stabia

Costa Brava ports



Port of Palamós

The ports of Palamós and Roses, that constitute Costa Brava ports, will welcome 59 cruise calls in 2020, bringing more than 61,000 passengers, slightly more than for 2019. Marella Cruises and Seabourn Cruise Lines have been calling at Palamós since 2005, Marella Cruises will bring more than 20 calls in 2020, whilst Seabourn Cruise Line will increase to eight calls during the season.

Ports of Catalonia started improvement works at the cruise mole in July at the Port of Palamós. They are expected to be finished in 13.5 months, at an investment of almost €3m.

Walking the Costa Brava's coastal paths, pedaling through the province of Girona on green routes, tasting D.O. Empordà wines, parachuting down over the bay of Roses, sampling local gourmet food in Michelin-starred restaurants, revelling at musical festivals, having a go at scuba diving or an introduction to astronomy. These are just a few of the truly authentic experiences that the Costa Brava offers visitors in search of memorable holidays.

The medieval villages of Peralada, Pals, Peratallada, Madremanya and Monells are excellently conserved architectural ensembles that are valued for their interesting secular and religious sculptural features. These villages are also outstanding in terms of their rich craftsmanship heritage, as can be seen from the annual calendar of numerous themed events such as fairs, festivals and markets.

Travelers should not miss the Dalí Triangle, formed by the Dalí Theatre-Museum in Figueres, the Salvador Dalí House-Museum in Portlligat and the Gala Dalí Castle in Púbol, and which also includes special temporary exhibitions at its sites.

MedCruise contact: Mario Cano
maria.canoo@gencat.cat



Dalí Theatre-Museum

Ceuta

The most popular tour from the port of Ceuta is to travel from the port to the highest point of the city stopping en route to see the wonderful views of the Strait of Gibraltar and the South coast of the mainland. Visitors will enjoy a panoramic view of the city of Ceuta and the north coast of Morocco. The main viewpoints of note are San Antonio situated in Mount Hacho and Isabel II situated in Mount García Aldave.

Cruise call numbers are on par with last year in the North African port, with larger ships calling which increase the capacity per call.

At port of Ceuta there is a new cruise terminal situated just 100mtr from the city centre. It can

accommodate increased passenger traffic as well as a ship of up to 300mtr in length. Facilities include lighting, signposting, green areas and new configuration of security systems including new locking systems for protecting restricted areas. A total of €2.2m was invested.

The Port Authority of Ceuta is working together with the Tourist Services of the Autonomous City of Ceuta in order to promote the city. The two entities have been attending seminars, meetings and conferences together to achieve this common goal.

MedCruise contact: Victor M. Jimenez
victor@puertoceuta.com



Cyprus ports



Limassol port expects an increase in cruise traffic of 40% from last year for 2019. 93 calls are forecast by year end, of which 53 will be transit calls and 40 home port calls. At the beginning of April Cunard's Queen Mary 2 and Costa Crociere's Costa Victoria arrived simultaneously. The same incremental trend is expected for 2020.

Larnaca port received 35 cruise calls in 2018 bringing in 31,000 passengers, and the numbers will be similar for 2019 and 2020 season. There is one regular caller, Mano Maritime's Crown Iris, which operates Haifa to Larnaca route between April and October.

The main attractions from Larnaca port are Larnaca sea front, the Finikoudes promenade and the excursions to the traditional Lefkara village, famous for the handmade embroideries of its residents.

From Limassol you can head north towards the Troodos mountains and discover the

hinterland of Cyprus, with its picturesque villages, monasteries, vineyards, boutique wineries and great scenery. Or visit the city of Limassol itself with its beautiful buildings and local cafes, stroll on the promenade and visit the old Limassol Port and Limassol Marina.

Works are still ongoing at Limassol after the inauguration of the New Passenger Terminal in 2018. A new digital platform was recently launched, full landscaping of surrounding area and installation of automated irrigation system is complete as well as a full range of latest technology remote smart monitors in both arrivals and departures. A new cafeteria and duty free shops are ready to commence in Q3 2019.

MedCruise contacts: Michalis Kefalonitis
laport@cpa.gov.cy
Charles Meaby (DP World Limassol)
charles.meaby@dpworld.com

Port System Authority of the Eastern Sicilian Sea



The most popular adventure tour offered from Catania is to Mount Etna, to reach the highest accessible point of the most active volcano in Europe. After a 90-minute scenic drive that leads through many hairpin bends to the Silvestri craters at an altitude of about 2,000mtr, a cable car takes you on to an altitude of 2,500mtr. With Unimog vehicles you can reach 2,800-3,000mtr, depending on the activity of the volcano. It is also possible to take a short hike along the crater rim with a mountain guide.

In the near future a new, modern and larger cruise terminal will be built at Catania cruise port. With a covered area of over 2,500sq mtr and a wide parking area with a capacity of almost 50 buses. Also, the project for the new terminal building will include a crew area with a relaxed zone equipped with wi-fi. Whilst plans for the larger terminal are ongoing, the current terminal has been refurbished. Cruisers can now find not only a large retail area, where it's possible to buy Sicilian food and handicrafts, but also new security equipment to speed up embarking and transit passengers and their luggage.

Currently 77 calls, and 183,850 passengers are booked to call at Eastern Sicilian ports in 2020, of those Carnival Cruise Line and Majestic Cruises are new callers.

MedCruise contact: Ilaria Tomasi
tomasi@adspmaresiciliaorientale.it

Dubrovnik

Active shorex available from port of Dubrovnik include; Jeep Safari, this excursion offers a unique opportunity to see the spectacular scenery of the Konavle valley from a completely different perspective. Driving with the high-quality jeeps, you will have the chance to get in touch with the nature in your own way. Driving through the valley will take you to the viewpoint Sivi Soko (Gray Falcon) in the hills, which offers a magnificent view of the valley and the Adriatic coast; another option is Blue Trail Horseback Riding Tour, you will be offered a short lesson and then an experienced trainer will lead you through the scenic countryside of Konavle. Idyllic pastures and beautiful surroundings – a vacation both horse and rider will be sure to enjoy.

Dubrovnik Port Authority (DPA) is actively and constantly developing its port area with new investments. Work ongoing includes;

Batahovina 2 – construction of two new berths of total length of 450mtr with two ferry ramps for international and domestic ferry traffic, smaller cruise vessels and mega yachts.

SSE facility – prefeasibility study for construction of SSE (Short Side Electricity) facility is completed and conceptual design is under way.

LED external lighting – with replacement of existing external lighting bulbs in port area with LED technology.

Figures for 2020 season are shaping up nicely with 472 calls bringing in 820,000 passengers forecast, a slight increase on 2019. Nine new arrivals announced in 2020 are Carnival Radiance, Celebrity Edge, Norwegian Getaway, Seven Seas Splendor, Marella Explorer, Mein Schiff 5, Enchanted Princess, Crown Iris and La Belle des Océans.

The DPA has decided to limit the number of daily cruise ship passengers to 6,000 whenever it is possible to improvement destination management of visitors.

MedCruise contact: Hrvoje Kulusic
dpa.hrvoje@portdubrovnik.hr



Jewel of the Seas



Catania Cruise Terminal

Egyptian ports

A full day tour from Alexandria port to Cairo includes your own Egyptologist! The tour takes in the Giza pyramids and the Great Sphinx of Giza, an adventure on a camel in the Sahara Desert, a visit to the Egyptian museum to see the Golden Mask of King Tutankhamen. There is then time to explore the local market before heading back to your ship.

Alexandria port received eight cruise calls in 2019, but has 32 scheduled for 2020, including four days where two ships will call at once. Similar increases in calls are scheduled at the other Egyptian cruise ports.

Alexandria port is renovating the infrastructure in order to encourage cruise lines to come back to Egypt. The terminal at Alexandria has a surface of 8,725sq mtr and parking for 350 cars or 80 buses, accommodating more than 5,000 tourists and five cruise ships simultaneously.

In June 2018, Egypt was ranked the safest country in Africa, according to the Gallup Poll. The survey placed Egypt 16th out of 135 countries.

Forbes magazine listed Egypt as the destination of the year for 2018 'the country is stable and ready to welcome travellers back'.

MedCruise contact: Karim Mohamed Mahmoud Youssef
karimyosef58@yahoo.com



Gibraltar



The port of Gibraltar welcomed its first AIDA cruise ship this year with the arrival of AIDAstella in port on Friday 26th April. As with all inaugural calls an exchange of plaques was held on board between the ship's captain, representatives of Gibraltar Tourist Board, Port Authority and local agents. P&O Cruises' Oriana made its final call to Gibraltar in May before being sold to China Travel Service and China Ocean Group Company. Fireboats using water cannons came out to bid the ship farewell after 24 years in service.

203 cruise calls bringing 327,176 passengers are scheduled to stop at Gibraltar in 2020 compared to 198 calls and 280,947 passengers for 2019. Maiden callers in 2020 include P&O Cruises' Iona, Holland America Line's Zuiderdam, Carnival Cruise Line's Carnival Legend, Silversea Cruises' Silver Moon, Ponant's Le Jacques Cartier and Princess Cruises' Island Princess.

For those wanting an active shorex, embark on an exhilarating trek as you climb to the Rock of Gibraltar's summit. Accompanied by a guide you get to journey along snaking inclines of the Gibraltar Nature Reserve Upper Rock Mediterranean steps, originally built as part of a military communication system, which you can see as you pass significant World War II fortifications. This protected area is home to lively wild Barbary Macaques and resting migrating birds.

MedCruise contact: Suyanne Catania
suyanne.catania@gibraltar.gov.gi

Port System Authority of the Eastern Ligurian Sea

In 2020 the Port of La Spezia is expecting to reach a very high increase in passenger traffic with a total of more than 900,000 transit (+30% compared to 700,000 estimated for this year) and 260 cruise calls (+75%). A maiden caller in 2020 will be Celebrity Apex.

The most popular shore excursions remain Florence, La Spezia/Cinque Terre and Pisa.

One of the strategic challenges for the Port Authority of the Eastern Ligurian sea, which

merges the ports of La Spezia and Marina di Carrara, is to develop cruising activities, with a new cruise berth at Paita wharf and a new cruise terminal through a public-private project announced in April 2019, by the partnership of Royal Caribbean Ltd, MSC Cruises and Costa Cruises in a €41m investment.

MedCruise contact: Monica Fiorini
monica.fiorini@porto.laspezia.it



French Riviera

For end 2019 season ports of French Riviera are forecasting; Nice – 86 cruise calls bringing 34,500 passengers, Villefranche – 84 cruise calls bringing 190,000 passengers, Cannes – 157 cruise calls bringing 472,154 passengers on 37 ships and Antibes – 18 cruise calls bringing 7,819 passengers on 13 ships. Figures for 2020 are forecast to be similar across all ports.

French Riviera ports will have the great pleasure to host the 55th MedCruise General Assembly in Cote d'Azur in October 2019. The team involved are planning to reinvent the experiences of the destination by discovering picturesque hidden gems, the diverse flavours of the Mediterranean region, the glamour of the

Cannes Croisette, as well as the rich range of artistic and cooking attractions.

Popular tours from the French Riviera ports are, from Nice – old town, perfumery of Grasse, Eze village; from Villefranche – Monaco; from Cannes – Monaco, Nice, excursion by speedboat; from Antibes – Old Town, Absinthe museum.

Soon the tramway terminus at the port of Nice will be completed which will create a direct link between the airport and the port. In 2019, two terminals are due to be built and then in 2020 improvement work at both terminals will be completed.

MedCruise contact: Anne-Sophie Peyran
anne-sophie.peyran@cote-azur.cci.fr



Huelva

The Route of Columbus is an excursion that starts at the place from where the journey of Christopher Columbus started. In 1492, local sailors travelled with Christopher Columbus to the Indies. They left the monumental complex of La Rábida behind. Travel back in time and get on board the vessels of the Discovery on the wharf Muelle de las Carabelas.

A new tour from the port of Huelva is 'The wonders of Jabugo'. The village of Jabugo is the supreme area for world-famous Iberian ham. Located in the Sierra de Aracena and Picos de Aroche Nature Reserve, this tiny town surprises even the most demanding palates. You will get to know how the 100% Iberian pig is raised and fed and the history of this excellent farmhouse. You will enjoy an interactive visit that will immerse you into this authentic experience. As a grand finale, you will taste Iberian ham paired with wine. Finally, you will enjoy a guided walk through the town to the Center for the Innovation and Promotion of the Iberian Pig, located in a spectacular building called Tiro Pichón, where you will become true experts about this animal

and the final product.

The new business strategy of port of Huelva is aimed at promoting the Levante Wharf and the target is now focused on smaller cruises and mega-yachts.

In order to reinforce the new strategy, the Port of Huelva have several infrastructure projects in progress such as the Marina Port of Levante Wharf that will become an outstanding leisure zone where citizens will be able to enjoy its shops, restaurants and many other amenities.

MedCruise contact: Manuel Vega
mvega@puertohuelva.com



Igoumenitsa

Parga is a charming seaside town set in an attractive bay with a small green islet at its centre. The old quarter is reminiscent of a Greek island settlement and its waterfront is lively with cafés, taverns and shops. Among its features there is a 17th Century Venetian Castle, originally built by the Normans in the 14th Century, a number of churches and an ecclesiastical and folkloric museum.

Not far from Parga lies the important archaeological site of Necromanteio (Oracle of the Dead). According to ancient belief, it is close to where the souls of the dead would begin their journey up river to reach Lake Acherusia and the Gates of Hades. Preveza is first mentioned by name in a 13th Century record of its conquest by the Genoese. Close to Preveza is the fascinating archaeological site of Nicopolis. Literally "Victory City", it was founded by Octavian after crushing Mark Anthony's fleet in the Battle of

Actium (31 BC). Visitors can see the city walls, a monument to Octavian, a theatre, an Odeon, the Nymphaeum, early Christian basilicas and a nearby archaeological museum.

MedCruise contact: Anna Pyroti
apiroti@olig.gr



Heraklion

201 cruise calls bringing 346,128 passengers are booked so far to call Greek port of Heraklion in 2020. Nine of those calls are maiden callers.

On April 16th the port hosted three ships simultaneously, Mein Schiff Herz on a transit call, while Mein Schiff 4 and AIDA vita, were both homeporting thus AIDA vita passengers were provided a fully equipped 800sq mtr tent as temporary terminal for the day.

Heraklion boasts many canyons, most of which cross the ranges of Psiloritis and Asterousia. Asterousia has wonderful hiking canyons, the most important of which are Agiofarago, Martsalo and Trafoulas. However, the most famous gorge is the canyon Gafaris at Psiloritis, crossing the magnificent oak forest of Rouvas. Other canyons of Psiloritis are the gorge of Kroussonas, through which passes the Minoan path to the Idaean Cave, the gorge Vromonero, the gorge Vorizano and the two small canyons of Asites (Saint Charalambos and Saint Anthony).

Apart from reachable gorges, Heraklion is home to some very popular technical canyons such as the imposing canyon of Arvi, which after an 80mtr high fall turns into a dark underground river. The areas of Tsoutsouras and Keratokambos is home to many steep canyons that have been equipped with bolts and anchors for training new canyoners.

Heraklion Port Authority is investing in new ISPS infrastructure, such as x-ray machines, these will be ready by September 2019. The rebuilding of the passenger station will be complete in 2020 and new fenders to improve port infrastructure will be completed by the end of 2019.

MedCruise contact: Kyriaki Kampana
kkampana@portheraclion.gr



Port Network Authority of the Ionian Sea

This year port of Taranto welcomed its biggest ship so far, the Marella Discovery, with more than 1,800 passengers. In 2020, there are 12 calls scheduled, with more than 14,000 passengers in transit, a growth of 50% compared to 2019. The Port Network Authority of the Ionian Sea is investing in the upgrade of the port waterfront and the St. Cataldo Pier with the purpose to start up a requalification process benefitting the port-city relationship. With the new Falanto Port Service Center on the St.

Cataldo Pier, ready for cruise season 2020/2021, the port will be endowed with a multipurpose building for both citizens and cruise travelers. With its areas of about 3,461sq mtr, the Center will be dedicated to a variety of activities, among which passenger services and cruise terminal; Port Network Authority offices; multipurpose auditorium, conference room and exhibitions.

MedCruise contact: Silvia Coppolino
silvia.coppolino@port.taranto.it



Istanbul

When Galataport Istanbul Cruise Port is completed, it will accommodate three ships at the same time and host an average of 15,000 cruise passengers per day and is expecting 1.5m cruise passengers and 7m foreign visitors annually to Galataport Istanbul. The annual visitor expectation is around 25m.

The new terminal is being constructed underground with world first bonded area separated from the rest of the area via special 3mtr hatches allowing all cruise operations to be conducted behind this wall and all passengers and luggage operations will take place in the underground terminal.

The new terminal is planned to be over 20,000sq mtr for domestic and foreign tourists to continue their journey without any interruption. Galataport Istanbul Cruise Port, also offers an underground tour bus parking lot on -1 level and car park of about 2,300 vehicles, and will also make an important contribution to the parking problem of the district.

Thanks to Galataport Istanbul, one of the most beautiful promenades of the city which has been hidden behind razor-wire fences, old warehouses and custom-boundaries will be open to

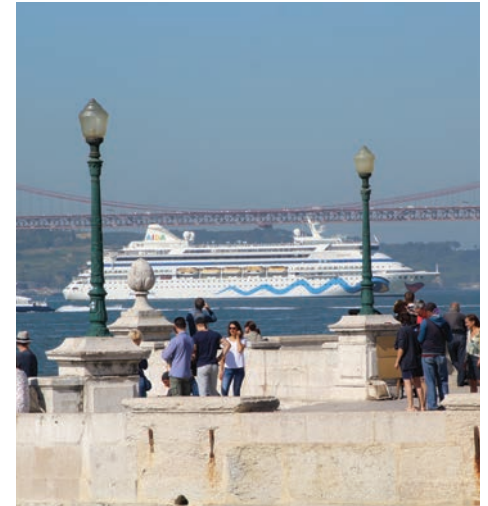


everyone.

Turkey has gained back the confidence of the major cruise companies and cruise traffic is picking up, coinciding with the opening in March 2020 of Galataport Istanbul Cruise Port. Bookings for next year include Carnival Corporation, Royal Caribbean Cruises, NCL, Celebrity Cruises, Azamara Cruise Club, Holland America Line, Regent Seven Seas Voyager, Oceania Cruises, Le Ponant, to name a few. The port is expecting over 60 calls in 2020 and over 120 calls for 2021 with over 15 different cruise companies. Moreover, the bookings are mostly for homeporting.

MedCruise contact: Figen Ayan
fayan@galataportistanbul.com

Lisbon



Currently the most popular active tour on offer in Lisbon is Lisbon by Bicycle. Hop on a bicycle for a dynamic pedalling adventure around Lisbon's most notable spots. Ride in safety alongside your guide for a two-hour outing, as you capture an up-close street view of Alfama, one of Lisbon's oldest neighbourhoods.

During your scenic journey, you'll pass the city's medieval cathedral, view the ornately sculpted Discoveries Monument, see 16th-century Belem Tower and admire riverside Commerce Square. Replenish your energy with a refreshment break before cycling back to port.

The Port of Lisbon won, for the fourth year in a row, and for the fifth time, the prize for the best cruise port in Europe, at the 26th edition of the World Travel Awards Europe, held on 8th June in Funchal.

The port expects 350 cruise calls and around 650,000 cruise passengers in 2020. There will be 22 new visitors: Amera; Mardi Gras; Celebrity Apex; Enchanted Princess; Fridtjof Nansen; Iona; Island Princess; La Belle des Oceans; Le Bellot; Le Jacques Cartier; Norwegian Dawn; Norwegian Epic; Norwegian Escape; Norwegian Getaway; Regal Princess; Ritz-Carlton Yacht; Sea Cloud Spirit; Seabourn Encore; Scenic Eclipse; Seven Seas Splendour; Silver Moon and Spirit Adventure. For these new visitors the port authority is preparing special welcome ceremonies.

MedCruise contact: Ana Lourenco
alourenco@portodelisboa.pt

Koper

The forecast for 2019 is a milestone of 110,000 passengers and 71 ship calls. Unfortunately, it seems that in 2020 there will be a slight decrease of approx. 10% in calls and also in passengers compared with 2019.

Newcomers to the port of Koper will be Ritz-Carlton Yacht Collection, the newest ship of Viking Cruises – Viking Jupiter, Mein Schiff 5, the first new build of Saga Cruises - Spirit of Discovery and Marella Explorer.

A new whole day shorex combination of Ljubljana & Lake Bled is a must when visiting Slovenia. Ljubljana, the Slovenian capital, is unquestionably the political, economic and cultural centre of the country. With over 20 universities, it is a young, exciting city. Given its small size, less than 300,000 inhabitants, it is pleasant to stroll through Ljubljana's Baroque centre or cycle across the city, through the Tivoli

Park and along the Ljubljanica River. Lake Bled is a truly special place, full of charm thanks to the medieval castle and church of the Assumption of the Virgin, situated on the island in the middle of the glacial origin lake, containing the famous wishing bell.

MedCruise contact: Bojan Babic
bojan.babic@luka-kp.si



Kotor

Port of Kotor currently has 529 calls booked for 2020, with more expected. 339 calls are already scheduled for 2021. Located at the end of the only fjord in the Mediterranean, Kotor offers beautiful monuments, churches, cathedrals and fortresses, good restaurants and museums providing a rich experience and a destination for exploring the surrounding areas.

Most popular shorex is the 'Montenegrin tour' transversing the Budva Riviera on mountainous coastal routes through villages, resorts and a

medieval fortification. Lovcen, a mountain and national park in southwestern Montenegro offers fabulous views over the town of Kotor.

Port of Kotor now has the possibility to invest in projects and will be commencing with the construction of two mooring buoys and a pylon dolphin as support for the main pier. These projects should be completed by end of year.

MedCruise contact: Ljubo Radovic
ljubor@t-com.me



Marseille

Marseille is France's leading cruise port and the 5th in the Med, with 2 million cruise passengers and more than 500 calls expected in 2020.

In late 2019, Marseille will welcome two new ships for the 2020 season: Costa Cruises' Costa Smeralda, the line's first LNG ship, and MSC Grandiosa, third Meraviglia class ship built in Saint Nazaire, France. Thus, in 2020, two LNG ships will operate in Marseille, AIDAnova and the Costa Smeralda.

With 6 stopovers along South Rhône (Châteauneuf-du-pape, Avignon, Tarascon, Arles, Port-Saint-Louis-du-Rhône and Martigues) and 95,000 passengers in 2019, Provence is indubitably a river cruise destination.

As Provence's cruise port, Marseille offers a wide range of shore excursions, including active tours. You can, for example, dive into the crystal-clear waters of the Calanques, horse ride in the wild Camargue, or cycle and hike in the Alpilles.

If you want to stay in the city centre, you can have a segway tour. Located in the heart of the Old-Port, the gyropode segway is offering a large palette of atypical excursions accompanied by certified instructors, with seven circuits beginning with a 30-minute initiation, up to a three hour tour.

The port features two cruise areas; J4 is dedicated to small luxury cruises ships, and is walking distance to city centre; Marseille

Provence Cruise Terminal (MPCT) can handle six megaships simultaneously with no size restrictions. Works are in progress in Terminal C to create a new terminal for turnaround.

Marseille is a "multiservice green port" with its cruise facilities, ship repair for small and mega cruise ships. The port will also renew the ESI Charter Program in 2020. Shore power studies have been launched in 2019 with the goal to offer shore electricity connections between 2022 and 2025.

Finally, the Marseille Provence Cruise Club is organizing an event on the theme of cruise ship energy efficiency and transition, the Blue Maritime Summit Marseille Provence – Cruise Initiatives. This event will take place on October, 17th 2019 in Marseille.

MedCruise contact: Hélène Lebas
hlebas@marseille-cruise.com



Piraeus

The port of Piraeus for 2020 is expected to have approximately 650 cruise ship calls, an increase of 30 compared to 2019, according to the current schedule, including around 15 new callers. The port is in the process of investing in new facilities including adding two more cruise berths for new generation cruise ships. A new cruise terminal will be constructed on the new pier.

From the port of Piraeus, you can take a guided tour of Athens with a local guide on an interactive walking tour through the famous Plaka neighbourhood. You'll stroll around the Monastiraki market, where you can browse traditional antique and jewellery shops among others, smell and learn about the Greek hens and try local baklava. Hear traditional Greek music and try some steps of the syrtaki dancing.

MedCruise contact: Theodora Riga
commercial@olp.gr



Madeira ports

2019 saw a total of 290 cruise calls to the ports of Funchal and Porto Santo bringing 560,000 passengers, also seven maiden callers. For 2020, the ports of Madeira want to consolidate their presence and present themselves to new cruise brands, as well as maintaining their partnership with the Canary and Cape Verde Islands.

The historical centre of the city of Funchal, better known as the Zona Velha (Old Town), presents the Painted Doors Project that transforms this area into a permanent art gallery.

This public art project intends to stimulate one of the most emblematic areas of downtown Funchal in order to turn it into a more significant and attractive cultural centre and a permanent

art gallery, joining several guest artists to work on decorative paintings on doors of houses, shops and other premises along Rua de Santa Maria, becoming works of art.

The Madeira Government has invested in the infrastructure of the ports, carrying Madeira into the next level of the cruise industry.

Further investment includes reinforcement of the bollards of the port of Funchal with capacity up to 150 tons and extension of the south quay in the port of Funchal (new berth position with more capacity to receive the biggest vessels under construction).

MedCruise contact: Patricia Bairrada
comercial@apram.pt



Malaga

Malaga port is expecting 500,000 passengers on 300 cruise calls in 2019.

In a great location for itineraries both to the Med and the Atlantic and with the International Airport only 15 min. away, the Port of Malaga is a completely new port compared to year 2000, including berths for every type of cruise ship in the world, two cruise terminals in the Eastern area and one in the inner basin next to the Palm Grove waterfront, for smaller cruise ships, in the heart of the city centre.

Shorex available can meet everyone's taste:

shopping, gastronomy, culture -with museums such as the Pompidou and Picasso Museum-, a beautiful pedestrianised city centre. And beyond the city, Ronda, Mijas or Nerja, Granada and the Alhambra or Cordoba are easily reachable in half-day or full-day excursions.

Malaga will host Seatrade Med on 16-17 September 2020.

MedCruise contact: Tamara Jiménez
tamarajmenez@malagaport.eu



Port Authority of North Tyrrhenian Sea

The 2020 cruise season will mark a significant growth in number of passengers for Port of Livorno: the prospects are 377 ships with more than 900,000 passengers. Regarding Piombino Port, five ships are booked so far and 70 for Portoferraio Port. Passenger numbers for Piombino and for Portoferraio are not yet forecasted.

From the port of Piombino, the Archaeological Mines Park of San Silvestro can be visited and contain unique examples of the mining and metallurgical cycle, from the Etruscan era to present day. The routes for visiting encompass museums, mining tunnels, a Medieval village of miners and foundry built around one thousand years ago (Rocca San Silvestro) and paths of historical, archaeological, geological and naturalistic interest.

Portoferraio is the major port of Elba Island. The town was built around the port to protect its most important part, the wet dock, and to close it off all around with its fortifications that seem to embrace it. As soon as you enter the port, you can admire the numerous fortifications built from 1548 onwards on request of the Medici. Forte Falcone and Forte Stella were built on the promontory, while Forte della Linguella was built to protect the wet dock. Since the iron left the Island from here, the name Cosmopoli was however soon changed to the original Roman

name of Portoferraio. When the French Empire came to an end, Portoferraio became the capital of a tiny Kingdom under Napoleon who was exiled here after his defeat in Lipsia, where he remained for ten months before fleeing back to France in order to regain his power. Today, Portoferraio, once a Medicean outpost in the Mediterranean, is without a doubt Elba's most popular port.

MedCruise contact: Francesca Morucci
f.morucci@portaltotirreno.it



Odessa



Despite the absence of cruise shipping in the Black Sea Region in recent years, its revival is announced in 2019-2020. Odessa Sea Port Authority is expecting a total of 15 river cruise vessels in 2019 and one ocean going cruise vessel from Phoenix Reisen in October 2019. For 2020, 11 cruise ships will call Odessa (companies such as Phoenix Reisen, Ponant, Azamara Club Cruises and Majestic International Cruises). 6,000 passengers are anticipated for 2020.

Odessa Sea Port Authority modernised the Marine station by refurbishing the inner premises. Plans are being implemented for the reconstruction of the concert and exhibition hall and the square in front of the Passenger Terminal building. The completion of the reconstruction will be the end of 2020.

Odessa Passenger Terminal is located in the historical centre of Odessa city, near the main sightseeing of the city Potemkin Stairs, The Monument to Duke de Richelieu, Deribasovskaya Street and the Opera and Ballet Theatre. The way from the passenger vessel to these most popular places is approximately 15 minutes on foot.

One of the most popular tours is 'Exploring Odessa', and its history. Odessa knows that she's neither Ukraine nor Russia, she's Odessa, that's all. Throughout its history, the city was built by absorbing different cultures, not just Western or Slavic. There are currently 137 nationalities. It is a cosmopolitan city.

Your exploration of Odessa will start at Primorsky Boulevard for a pleasant walk to the monument to Duc de Richelieu, descend the 192 Potemkin Steps, the gala entrance to the city for those who arrive in Odessa by sea. The steps built between 1837 and 1841 have become a recognisable symbol of the city specially after Eisenstein's great film 'Battleship Potemkin'.

A gentle stroll will take you to view the Archaeological Museum with its graceful columns. It was founded in 1875 and is the oldest in the Ukraine. A Roman copy of the famous Laokoon marble statue is placed in front of the museum. Marvel at the famous elaborate Opera and Ballet Theatre, designed by two Viennese architects Helmer and Felner and ingeniously realized by the Russian and Ukrainian masters in 1884-1887.

MedCruise contact: Julia Strikh
syi@ods.uspa.gov.ua

Motril-Granada



There are a number of adventure and active tours available from port of Motril-Granada.

Dive Baptism is an experience that introduces you to the world of diving without the need for previous experience. Our guests, experience what it feels like to breathe underwater, what it feels like to be wrapped in an environment without gravity.

The diving instructor will accompany you at all times before, during and after the dive, to ensure your safety. Diving Baptism consists of a theory class prior to immersion and an immersion in the sea accompanied by a PADI Instructor.

Also available in the water is Paddle surf, accompanied by specialised monitors you will enjoy an unbeatable experience on water. On a

paddle surf board you will go to the natural area of Maro/Cerro Gordo, an area classified as special conservation and protection, with crystal clear waters and spectacular sea beds.

If you wish to stay on land, Granada itself is beautiful, and its remnants of stunning architecture quite superlative. Visit the

cathedral, a masterpiece of Renaissance style constructed after the reconquering of Granada by the Catholics. It was built right over the top of Granada's largest mosque. It is fair to say that nothing in all of Spain compares to the wealth of architectural art found in the 14th century Alhambra – a Muslim-Hispano complex of palaces and gardens. This breathtaking example of Muslim architecture is completely encircled by walls and towers, and inside are palaces, military buildings, a fortress, an administrative centre, courtyard and fountains wrought in exquisite detail.

MedCruise contact: Lorenzo Vera Franco
lvra@motrilport.com

Sibenik

Sibenik expects 105 arrivals in 2020 and around 32,000 passengers. Maiden callers will be Viking Sea, Sea Princess, Silver Shadow, Club Med 2 and Silver Moon. Number of arrivals will be similar to 2019 and the few previous years but expect to see a 25% increase in the number of passengers.

The Maritime Passenger Terminal Project which includes the construction of a new two-storey passenger terminal building and garage will start in 2020 and it should be finished by December 2021.

For all the restless spirits in quest for an adventure there is a full day jeep safari excursion on Croatia's largest mountain, Velebit. The mountain stretches along the Adriatic coast and is part of the Dinarid mountain range. Its highest peak is Vaganski at 1,757mtr.

The safari stops at Libinje plateau, a place famous for wild horses. The trip continues towards Tulove Grede, legends say that fairies

and dragons used to live between these stunning breathtaking cliffs. Beneath this cluster of rocks is situated the Church of St. Francis that was built in 1832 by Austrian emperor Francis I. The last stop is Zrmanja river where one can enjoy the beautiful and relaxing scenery and tranquility of the waterfalls.

MedCruise contact: Gordana Mrcela
info@portauthority-sibenik.hr



Sète

Cruise tourism for 2020 keep on growing with more than 150,000 passengers expected and over 80 calls compared to 2019 when 120,000 passengers on 75 calls stopped at French port of Sète. More than 20 cruise lines are calling Sète in 2019 with around 12 maiden calls.

For many years, the most popular tours have remained the classic ones, visiting the top regional tourist sites such as Carcassonne among other UNESCO sites.

However, a new trend has started to develop with new more active excursions, based on providing guests a local experience.

Sète is famous for jousting battles and we are currently implementing new tours related to the jousting. Also, a new tour delivers great experience to the guest offering a private ride on Sète waterways to reach the preserved Thau lagoon and taste fine oysters and wine directly on the production farms. Last but not least, stand up paddling on the Sète Canals and waterways has become very popular!

The Region has recently validated a €45m investment program for a brand new passenger

terminal which will be operational in 2022. Also, with the completion of the main quay in 2016 (quay H 465mtr long) this could be followed in the near future with a new quay to cope with cruise activity growth.

In May 2020, Sète Cruise Club celebrated its 20th anniversary. A fantastic event attended by cruise industry personalities such as Aïram Diaz, President of MedCruise and other ports from the French Med to show the ambition to work together.

MedCruise contact: Guillaume Hamel
hamel.guillaume@portsuddefrance-sete.fr



Rijeka

In 2020, Port of Rijeka Authority expects around 35 cruise ships with more than 60,000 passengers, a considerable increase on figures for 2019 when 26 calls bringing 44,700 is recorded. Six ships are maiden callers in 2019 and eight new vessels will call in 2020.

The most popular tour in the Kvarner Bay area is The Shrine of Our Lady of Trsat, the largest centre of pilgrimage in western Croatia situated 138mtr above sea level. Trsat is a medieval fortified town and once home to one of the oldest Croatian noble families – the Frankopan family. The town is an unavoidable landmark as the oldest Marian shrine sanctuary in Croatia, and with a wonderful view of Kvarner Bay.

In order to accommodate larger vessels into the Port of Rijeka, the Port Authority has invested in the construction of two floating pontoons of 9mtr by 6.5mtr. By installing floating pontoons on the Molo Longo breakwater, Rijeka can now host vessels up to 300mtr in length and 9mtr draught. These pontoons will be ready to operate in October 2019.

Port of Rijeka Authority is involved in the city of Rijeka's project – Rijeka 2020, European Capital of Culture. The city wants to improve the scope and variety of the city's cultural offerings, expand accessibility and participation in culture and improve international visibility as well as the city's and region's profile.

MedCruise contact: Snjezana Papes
snjezana.papes@portauthority.hr



Portofino

A popular tour from Portofino is hiking in the Portofino Regional Park. Portofino is not only a picturesque village; it's also a regional park that includes the Portofino Promontory. It's an area rich in biodiversity, it is a paradise of Mediterranean vegetation that can be explored hiking an extensive network of trails. It is possible to hike all year round on the magnificent coastal paths that run like balconies overlooking the coast or in the forests of the interior and the higher areas that provide shade during the hotter months. It's a walk in a unique

environment both for the flora and for the geological conformation.

Another popular tour is a visit to San Fruttuoso via private boat or ferry, a beautiful and secluded fishing village south of Portofino with 10th century Abbey and painted houses, handicrafts, welcoming beachfront trattorias, and underwater statue of Christ.

MedCruise contact: Giorgia Collalti
g.collalti@marinadiportofino.com



Port Authority of The Strait

There are a number of maiden callers due at the port of Messina in 2020, MSC Opera, MSC Grandiosa, AIDamira, Carnival Radiance, Carnival Legend, Explorer of the Seas, Celebrity Edge, Anthem of the Seas, Disney Magic, Sovereign, Mein Schiff 2, Enchanted Princess, Viking Sea, Seven Seas Splendor, Seabourn Ovation, Costa Mediterranea, Costa Luminosa and Costa Diadema. 180 cruise calls in total are due bringing in 494,163 passengers, which is just over 10% increase on 2019.

Popular with cruise visitors is the Regional Museum of Messina renowned for the Polyptych of Saint Gregory, signed by Antonellus Messanensis and dated 1473. The two-sided painting with Madonna and Child and Franciscan in adoration (recto) and Ecce Homo (verso), the extraordinary wooden crucifix of presumed Spanish origin, the marvellous Flemish panels and the precious art work collection of Antonello's school stand out, its two Caravaggesque alterpieces including the raising

of Lazarus and the Adoration of the Shepherds painted during the Lombard genius' stay in Sicily, between 1609 and 1610.

The Port Authority is currently selecting the company that will build a new cruise terminal with a public tender.

MedCruise contact: Cristiana Laura
laura@porto.messina.it



Souda/Chania



For 2020 the port of Souda/Chania expects more than 330,000 cruise guests on almost 200 calls, which represents a 15% increase from last year. Of these calls, ten are from new cruise ship visitors.

Souda Port serves the Chania destination, which is one of the most diversified destinations in Europe. Just 40 minutes from the Port there is the entrance point of the Samaria Gorge (the one and only accessible gorge in Europe) and this is where the most popular adventure/active excursions are offered. This excursion is ideal for fit cruise guests (non-active guests can hike until the first stop after the point).

By spring 2020 a new Cruise Terminal will be inaugurated, with a seating area for up to 1,000 passengers, fully equipped, for passenger handling operations etc. and also in the pipeline in the Master Plan 2021 is the ADRIAS Terminal (waiting area, passenger handling, security procedures, etc.) serving both coastal and cruise ships for capacity up to 2,000 passengers.

MedCruise contact: Stella Manioudaki
stelman@ltnx.gr

Tarragona

The forecast for 2020 is approximately the same volume as 2019, but there are several calls that are requested but still not confirmed. There is a forecast of 24 new ships calling to port of Tarragona for 2020, and in 2019 there were 11 new cruise ships.

The most popular adventure/active tour sold on family friendly cruise ships is spending one day in PortAventura Park and Ferrari Land, one of the most popular theme park resorts in Europe, and as it's only 15 minutes away from Tarragona city.

Tarragona is the only city in Catalonia that is a UNESCO World Heritage Site. In addition, as a destination it has different sites that are recognised by UNESCO, such as the Monastery of

Poblet, the Ebro Delta, the human towers ('castells') and the Mediterranean diet. It is a tourist destination that is characterised by the wide range of excursions that can be offered to all audiences.

A new cruise berthing facility is underway called 'Balears berth'. It will be an additional berth to that currently used for cruise ships, and will offer an additional 700mtr of berthing to the current 700mtr. The improvement will offer a larger area for ground operations, in a total of four hectares. It is forecasted to be ready between May and September 2021.

MedCruise contact: Sandra Domenech
cruises@porttarragona.cat

Tangier

There are a whole host of cooking classes available as shore excursions from the port of Tangier. Guests get introduced to the important facets of Moroccan culture and hospitality. The chef shares with them great tricks and the essentials to make a delicious chicken or Beef Tagine with prunes, bread, and couscous, they get introduced to the different ingredients so that they can enjoy leisurely moments with friends and family when they are back home.

A Glimpse into Moroccan life through the keyhole of cooking classes such as:

Bread & Tea Experience- 3 Hours - learn to serve and enjoy Moroccan Mint Tea, learn to prepare and bake traditional Moroccan Bread, visit the ferran (community wood-burning oven), experience a Moroccan degustation with cheese and more; Chicken & Olive Tagine- 4 Hours - Bread & Tea experience, visit to the spice shop, hands-on, step-by-step lesson in preparing a sumptuous Tagine; Royal Couscous- 5 Hours - Bread & Tea experience, visit to the spice shop, hands-on, step-by-step lesson in preparing an impressive Couscous.

There are currently 63 cruise calls scheduled for 2020 to Tangier port, which is an increase of 13% on 2019. These calls are mainly from regular cruise lines as well as from new ones such as TUI Cruises, Crystal Cruises and Scenic Cruises.

MedCruise contact: Jamil Ouazzani
jamil@tangerport.com



Toulon-Var-Provence



Centrally located in the Western Med and nestled at the heart of a sheltered bay in the French Med, Toulon is known as a safe and quality alternative to cruise in the French Med.

Beyond, Toulon is a destination, offering a relaxing atmosphere, a direct access to some of the most beautiful beaches of the French Riviera and the authenticity of the Provençal way of life.

In Toulon the cruise guests get the chance to slow down, take a breath and take it easy.

In terms of welcoming experience and enhanced services Toulon has been attracting more and more premium and luxury brands. This

trend is confirmed for 2019 and beyond.

The city of Toulon is developing a project on the waterfront as a dedicated cruise area. The 44 acre site will include a pier to accommodate the largest ships currently employed in the Med. Located 500mtr away from the existing downtown terminal, the project should be completed by end of 2022.

There are about 100 ships expected to call port of Toulon-Var-Provence in 2020, bringing 185,000 passengers. There will be 5 maiden callers.

MedCruise contact: Delphine Beudin
delphine.beudin@var.cci.fr

Tenerife ports



The Teide National Park is the largest and oldest National Park in the Canary Islands and home to the highest peak in Spain, the Teide which is on the UNESCO World Heritage list. The peak of Teide, at 3,718mtr, is the third highest volcano in the world from its base, and

the tour lasts around 5 hours and ends taking the cable car to the top. This is one of the most popular pastimes for visitors, with views that cover the surrounding islands.

In 2018 Ports of Tenerife surpassed one million cruise passengers and by the end of 2019 expect to keep around that figure although the number of calls is slightly lower, the increase in the size of the cruises is notable.

For 2020, the ports anticipate that the season will continue to be shortened and primarily serve as a winter destination and with the rebound of the east Mediterranean may divert some itineraries to that area but it will not have a significant impact of numbers of visiting ships and passengers.

MedCruise contact: Itziar Alonso Berasaluce
ialonso@tenerifeport.org

Thessaloniki

The most popular tour for cruise passengers from the Greek port of Thessaloniki is 'The Land of Alexander the Great'. The tour takes guests for a drive through the countryside with a stop at Pella, the birthplace of Alexander the Great. Here guests can visit archaeological sites, enter residences of ancient aristocrats from the 4th century BC, and see findings from excavations on display in the museum. The tour will also take guests through Veria, to Vergina, where they can visit

the museum that houses the Royal Tombstones and treasures from Alexander the Great's father, Philip II's, mausoleum. The tour also includes the option to enjoy a traditional Greek lunch at a local restaurant.

There are four ships scheduled to arrive this year. From 2020 onwards, the number is expected to grow significantly.

MedCruise contact: Evgenia Traikapi
etraikapi@thpa.gr

Valencia

In 2018, Valencia port received 199 calls with 421,518 passengers, forecasts for the end of 2019 show 200 calls with 435,000 passengers. Growth continues with figures for 2020 showing 205 calls bringing in 436,000 passengers. The ports strategy for cruise traffic is 'a non-congested port, with a non-congested destination, aware of the importance of environmental and social sustainability in cruise traffic'.

The port has been working with the local community and local institutions, particularly Valencia Tourism, in developing new shorex opportunities for example, hands-on experiences, active excursions by bicycle or urban trekking, connecting with local experiences like paella cooking.

Also, working with the local municipality and Valenciaport Foundation in mobility issues and sustainability actions to promote the best connections between the port and the main excursions points in the city.

Valencia port is working in developing new excursions within the Valencian Region Area outside the urban district. This will mean involving more destinations into cruise traffic, all of them within an hour's drive from the port.

New infrastructure includes the design of a new passenger area situated at the entrance of the port.

MedCruise contact: Francesca Antonelli
comercial@valenciaport.com



Valetta

Valetta Cruise Port has teamed up with Smarter Car Rentals, a young company established in 2018, to encourage greener, zero emissions eco-tours around Malta – a fun, environmentally-friendly option, which is both comfortable and affordable.

A pool of 18 electric, silent cars are on offer to cruise passengers who want to tour Malta independently, and in an eco-friendly manner. The battery-powered cars accommodate two persons and are able to travel up to 100km without recharge, and can be charged in a number of places around the Islands if required.

The stylishly-designed cars offer the freedom of a bike with the comfort and stability of a car. There is no need to wear safety helmets, yet there is the additional safety of seatbelts. They offer a cool interior even on the hottest Mediterranean day. Their small size makes them ideal also for use within city centres. The cars can be driven on bus lanes and allow for easy parking ensuring that one makes the most of the available time.

The package appeals to both the return cruisers who want to make their own way and

tour around the Island independently, or to the first-timer as the package comes with a GPS, maps, as well as a rescue service if required, as well as comprehensive insurance.

One can opt to follow a recommended 'Best of Malta in a 3-hour Ecotour' with a North of Malta and a South of Malta option visiting popular places like Marsaxlokk, Blue Grotto, Mdina and the Three Cities, and other recommended lesser known attractions; or just opt for off-the-beaten track, independent travel on impulse.

MedCruise contact: Stephen Xuereb
sxuereb@vallettacruiseport.com



Zadar

145 cruise calls are due at port of Zadar in 2020, compared to 140 for 2019. There are 190,000 passengers expected next year, compared to 182,00 that visited this year. It is an approximate 4% increase in passenger numbers.

The 3,000 year old city of Zadar is full of historical monuments (Medieval City Walls – UNESCO site from 2017, St. Donat Church etc.) and attractions like the Monument to the Sun and the Sea Organ. It is surrounded by many beautiful villages, five National Parks and three Nature Parks, good highway connections and vicinity to other Dalmatian cities like Sibenik and Split making Zadar a perfect destination for exploring Croatia.

National Park Krka Waterfalls are the most beautiful travertine waterfalls in Europe.

This is the world of the Krka River which runs over cliffs and falls in 46mtr of profundity! Take some time to make a relaxing walk along the river, enjoy the splendid nature and water. You may also visit a small museum and an old mill. In the summer time you can enjoy the refreshing bath in the river. National Park Plitvice Lakes are an unforgettable natural spectacle. For millions of years, the water has carved its way through travertine rocks making deep lakes and waterfalls. It is the best known Croatian national park and has been on the UNESCO Register of World Natural Heritage since 1979. You can enjoy a long walk through the park and forest and get on board electric boats to enjoy the blue-green colours of the lakes. The exceptional beauty of the lakes and waterfalls, rich plant, animal life and pure mountain colours attract many nature lovers from all over the world.

MedCruise contact: Djoni Stambuk
dstambuk@port-authority-zadar.hr



Venice



Under an hour from Venice is Padua, a city dating back to the Roman Empire that reached its height during the Italian Renaissance when Giotto, Dante, Donatello, and Petrarca were active there – a tour includes a visit to the following highlights: the Basilica of St Anthony, a majestic building of Romanesque, Gothic and Baroque styles; the Jewish Ghetto area, one of the best preserved areas of the city;

Prato della Valle, one of the largest squares in Europe; the Scrovegni Chapel with Giotto's frescoes; the Bo Palace, the main seat of Padua's 13th century university; the Botanical Garden founded in the XVI century as the private University garden of curative herbs; the Caffè Pedrocchi, a famous meeting place for students, teachers and literary figures.

MedCruise contact: Galliano Di Marco
g.dimarco@vtp.it

The most popular shorex undertaken by guests on ships visiting Venice are: tour of the Doge's Palace & St. Mark's Basilica, including Ponte dei Sospiri (Bridge of Sighs); tour of Burano and Murano islands with their lace-producing and glass-blowing traditions; gondola tour; and walking tours exploring some of Venice's lesser-known, but celebrated sites such as the Jewish Ghetto, Campo San Polo, Campo San Rocco, San Basilio and the Greek Orthodox District.

Port Authority of Western Ligurian Sea

Port of Savona will host the naming ceremony for the new 180,000gt Costa Smeralda currently under construction in the Meyer shipyard in Turku. From November 2019 until spring 2021, Costa Smeralda will call Savona every Saturday. Major work has begun in the Savona cruise port, for a total investment of around €24m. The Western Ligurian Sea Port Authority is dredging the sea bed in front of the Palacrociere main cruise terminal quay to increase the draught from the current -9mtr asl

to -11mtr asl, after consolidation of the structure. Total cost of the work is estimated to be €19.35m.

Costa Cruises will invest €4.5m to buy two new passenger boarding bridges and adapt the structure of the Palacrociere main cruise terminal by reorganising the spaces and flows.

Port of Genoa will welcome 276 calls in 2020, whilst Port of Savona will welcome 165.

MedCruise contact: Cristina De Gregori
cristina.degregori@portsofgenoa.com



MedCruise News

President: Airam Diaz Pastor

Secretariat

Jordi Caballé Valls, Secretary General

Anja Lohrum, Secretariat Advisor

Sara Valls, Secretariat Advisor to the

Secretariat team



facebook.com/medcruise.association



@MedCruisePorts



MedCruise



MedCruise

Muelle Ribera S/N. Ed. Puerto-Ciudad, Of. 5B

Puerto de Santa Cruz de Tenerife

38001 Santa Cruz de Tenerife, Spain

Tel: +34 922 533383

secretariat@medcruise.com

www.medcruise.com

www.medcruise.cn

#PortsTogether

September 2019 | Issue 58

Ports Together

www.medcruise.com
www.medcruise.cn



The Association of the cruise ports from the Mediterranean Sea, Adriatic Sea, Black Sea, Red Sea and Near Atlantic.

Working together with our members for a sustainable cruise industry and promoting our region as the **best world wide** cruise destination.