

MedCruise NEWS

Issue 60

September 2020



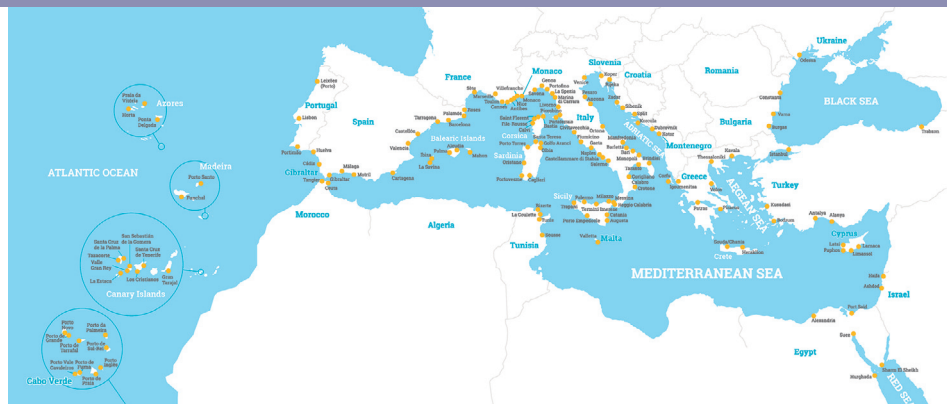
MORE THAN
EVER

PORTS
TOGETHER

#WeAreSocial

www.medcruise.com
www.medcruise.cn

MedCruise Statement on the impact of the outbreak of COVID-19 on the cruise industry



MedCruise Association would like to show its support to all of its Port Members and Associate Members that are dealing the impact of the outbreak of COVID-19 as well as to all the cruise industry community and partners.

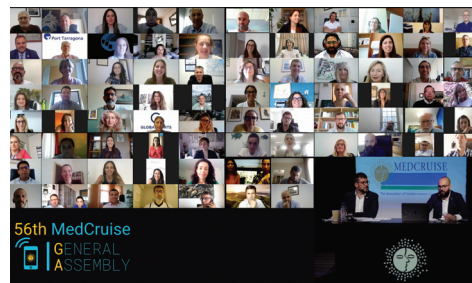
MedCruise Association is a great family composed by 74 Port Members (representing more than 135 ports) and 34 Associate Members from 21 different countries, some of them being unfortunately affected by the above mentioned COVID-19. MedCruise recommends to follow the preventive measures taken by World Health Organisation (WHO), Governments, National Health Institutions and Centres for Diseases and Prevention.

The Cruise Industry is being affected by the situation as its regular activity is directly concerned by the preventive measures taken by some countries such as severe mobility measures inside the national territories and banning flights from certain destinations.

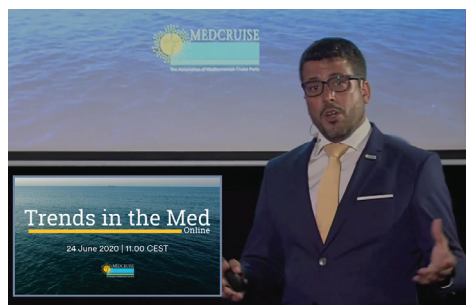
Moreover, Cruise Lines had been forced to cancel their programs in many regions, having a direct impact on the cruise calls and cruise passengers that manage our ports and visit our destinations, after WHO announced COVID-19 outbreak as a pandemic on 12 March, 2020.

"I would hereby like to express my support to all the countries and regions being affected and also to transmit a message of calm. Right now, it is time to assist your clients, support them and try to find solutions to their challenges", said Airam Díaz, President of MedCruise. "This situation will have a big economic impact in our companies as well as in our communities. However, I am pretty sure that with our work and commitment, we will get over this challenging but also temporary period. We need also to encourage our companies and societies to help in mitigating this slow down on the cruise industry. I believe this will make us even stronger and we will learn from this situation" added Díaz Pastor.

56th MedCruise GA (online)



Members of MedCruise Association, took place on May 27, 2020 and Trends in the Med Session, delivered by the MedCruise president, on June 24, 2020.



The 56th MedCruise General Assembly was scheduled to be held in Costa Brava, Palamós and Roses - Spain, on 26-29 May 2020. Due to the impact of the Coronavirus (Covid-19) in the Mediterranean region and its adjoining seas, this major event needed to be postponed to 2021.

However, it was possible for the event to be held online, for the first time in the history of MedCruise.

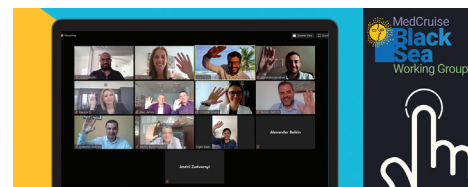
Internal Matters, addressed just to

MedCruise members agenda, May 2020

MedCruise Association and its members have been very active during 2020, running continuous online meetings and BoD meetings every month, with the only goal of pushing forward the Association's role more than ever. The month of May was a highlight where 5 important Working groups meetings involving all regions of the Association and one Constitution Amendments Study Committee meeting took place.

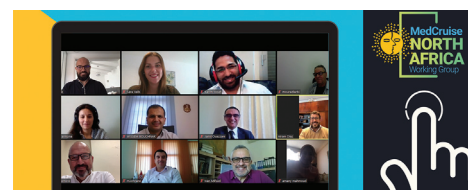
05 May 2020, Black Sea Working Group, online meeting;

- Joint action plan
- Marketing programme
- Joint actions in exhibitions
- General Assembly organisation



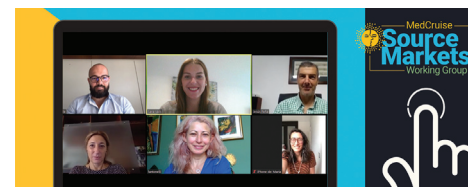
07 May 2020, North Africa Working Group, online meeting;

- Creation of new itineraries
- Regional promotion
- Previous calls analysis
- Training & Education



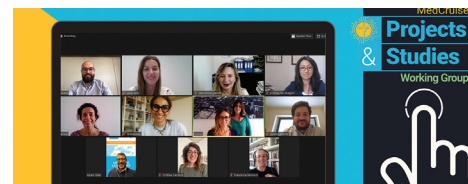
12 May 2020, Source Markets Working Group, online meeting;

- Meeting with travel agents worldwide
- Promotion of the Med as a cruise destination
- Mature markets focus



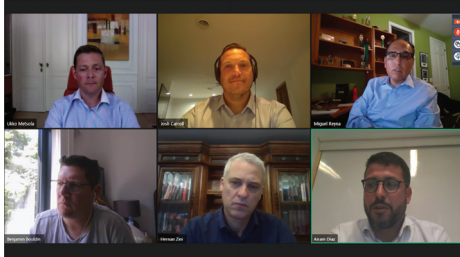
14 May 2020, Studies Working Group, online meeting;

- Cruise industry analysis
- Impact on destinations
- Unified survey
- Projects with cruise lines



Online Webinars

The first Webinar "MedCruise meets Royal Caribbean" was a great success with a total of 112 attendees interacting with 5 executives from the brand and MedCruise President, moderated by Mr. Nicky Guerrero. Thanks to all members for their participation and Royal Caribbean for their collaboration.



Royal Caribbean: Josh Carrol, Ben Bouldin, Hernan Zini, Ukko Metsola and Miguel Reyna.

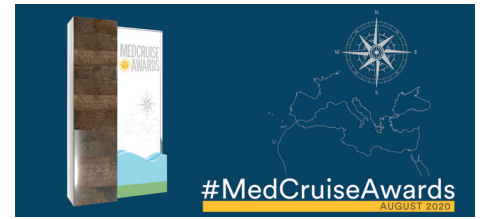
MedCruise held the webinar "MedCruise meets Costa Cruises" which was a great success.

Moderated by Mr Chris Ashcroft, MedCruise President, Mr. Airam Diaz, together with Costa Cruises President, Mr. Neil Palomba, discussed current issues and improvements to come in our Industry. Thanks to all members for the participation and Costa Cruises for their collaboration.



#FosteringKnowledge #MoreThanEver #PortsTogether

MedCruise Awards 2020



The 2nd edition of the MedCruise Awards took place on 11th August. MedCruise Association has celebrated this gala to recognise excellence in the industry; and the categories of the awards reflect the diverse nature of the industry and the innovation taking place.

Categories and winners of the awards:

- Cruise Line Executive Showing the Greatest Commitment during the Covid-19 pandemic: *Michel Nestour from Carnival Corporation, for keeping in contact with MedCruise members and showing interest in our destinations.*
- Award for the cruise line that has shown the greatest solidarity and commitment during the pandemic: *Celestyal Cruises, for purchasing a cruise vessel during the pandemic.*
- Port showing the greatest commitment during the pandemic from the West Med Region of MedCruise: *Gibraltar Port Authority.*
- Port showing the greatest commitment during the pandemic from the Adriatic Sea Region of MedCruise: *Dubrovnik Port Authority.*
- Port showing the greatest commitment during the pandemic from the East Med Region of MedCruise: *Galataport Istanbul & Kuşadası, Antalya, Bodrum; Global Ports Holding.*
- Port showing the greatest commitment during the pandemic from the Black Sea Region of MedCruise: *Odesa Sea Port Authority.*
- Award for the MedCruise associate member showing the greatest commitment during the pandemic: *Intercruises Shoreside & Ports Services.*
- Award for the Best Cruise Industry article: *Cruise Times, for the article "An Aegean Resurgence - The future is bright for the Eastern Med".*
- Lifetime Recognition Award: *Alexandra Mendonça, from Madeira Ports, for her outstanding contribution to the Cruise Industry.*
- Award for that cruise industry experts that have shown their greatest commitment and insight during the pandemic: *Chris Ashcroft from Cruise Insight, for his videos and articles on the future of the Cruise business after the pandemic.*
- Award for the international cruise industry association that has assisted greatly towards the comeback of the cruise industry: *CLIA Europe, for its commitment for the resumption of the cruise operations in MedCruise ports.*
- Award for the maritime organisation or organisations for exceptional commitment during the pandemic: *IAPH, for leading the dialogue among the world's cruise ports organisations about the future of cruise tourism, in collaboration with the IMO and the UNWTO.*
- Award from the MedCruise Presidency: *Michael McCarthy (chairman, Cruise Europe), for his commitment with the whole cruise industry and valuable cooperation with MedCruise Association.*

Online Professional Development Course 2020

MedCruise provided an online edition of the Professional Development Course in 2020. The PDC'20 was divided in two sessions and included topics like: How to best organize yourself and your team to promote your port and prepare the most effective cruise operations, Top 10 ways to conduct efficient cruise marketing and communication for ports and destinations and How to get the best results when attending cruise events, among others.

The association organises the Professional Development Course for its Port members and Associate members to widen our horizons through courses and training, giving specific attention to conduct interesting and fun courses. In this particular time, it is more important than ever to be updated and stronger prepared for the comeback of the cruise industry. Ms. Figen Ayan, MedCruise Director of Professional Development Course, leads this task.



Virginia López Valiente
CEO Cruises News Media Group



Luis de Carvalho
CEO Bermello Ajamil & Partners Europe



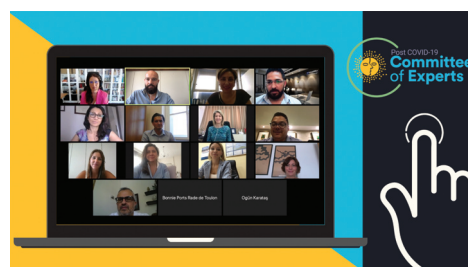
Michael Vanderbeek
Director of Ports & Maritime Bermello Ajamil & Partners



Thomas Spina
President Busabily

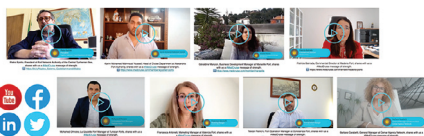
Post Covid-19 Committee of Experts 1st meeting

MedCruise created a new Committee of Experts, addressed to Port Members and Associate Members, regarding the post-Covid-19 situation. It was launched on the 15th of July, 2020. The aim of this Committee is to share the expertise and best practices of our members in order to offset our industry and get back the cruise traffic in the Mediterranean and adjoining seas, the best cruise region worldwide, once the sanitary crisis will be over.

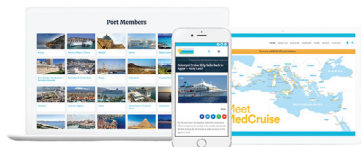


Summary of other MedCruise actions

Short videos campaign



New Website 2020



Statistics Report 2020



Covid-19 Impact: Lay-up/Shelter



Covid-19 Impact: Comeback Analysis



Meeting with Honorary Presidents



New Working Groups



Cooperation with other Associations



National Port Associations



MedCruise members

- ALANYA
- ASHDOD
- AZORES
- BALEARIC ISLANDS
- BARCELONA
- BASTIA/NORTH CORSICA
- BURGAS
- CABO VERDE PORTS
- CADIZ
- CANARIAN PORTS
- CARTAGENA
- CASTELLON
- CENTRAL ADRIATIC SEA
- CENTRAL-NORTHERN TYRRHENIAN SEA
- CENTRAL TYRRHENIAN SEA
- CEUTA
- CONSTANTA
- CORFU
- COSTA BRAVA CRUISE PORTS
- CYPRUS PORTS
- DUBROVNIK, KORCULA
- EASTERN LIGURIAN SEA
- EASTERN SICILIAN SEA
- EGYPTIAN PORTS
- FRENCH RIVIERA PORTS
- GIBRALTAR
- GIOIA TAURO
- HAIFA
- HERAKLION
- HUELVA
- IGOUMENITSA
- IONIAN SEA
- ISTANBUL
- KAVALA
- KOPER
- KOTOR
- KUSADASI/BODRUM/ANTALYA

- LEIXOES (Porto)
- LISBON
- LIVORNO 2000
- MADEIRA PORTS
- MALAGA
- MARSEILLE
- MONACO
- MOTRIL-GRANADA
- NORTH TYRRHENIAN SEA
- ODESSA
- PATRAS
- PIRAEUS
- PORTIMAO
- PORTOFINO
- RIJEKA
- SARDINIAN SEA
- SETE
- SIBENIK
- SOUDA/CHANIA
- SOUTHERN ADRIATIC SEA
- SPLIT
- THE STRAIT
- TANGIER
- TARRAGONA
- TENERIFE PORTS
- THESSALONIKI
- TOULON-VAR PROVENCE
- TRABZON
- TUNISIAN PORTS
- VALENCIA
- VALLETTA
- VARNA
- VENICE
- VOLOS
- WESTERN LIGURIAN SEA
- WESTERN SICILIAN SEA
- ZADAR

Associate members

- ALGERIA CRUISE SERVICES
- CEMAR
- CEUTA TOURISM
- COSTA BRAVA TOURISM BOARD
- COUNCIL OF SANT CARLES DE LA RAPITA
- COUNTY P. A. OF DUBROVNIK
- CRUISE SERVICES MONACO
- CYPRUS DEPUTY MINISTRY OF TOURISM
- DP WORLD LIMASSOL
- INTERCRUISES SHORESIDE & PORT SERVICES
- KVARNER REGION TOURIST BOARD
- KYRIAKIS TRAVEL S.A.
- LA GOULETTE CRUISE TERMINAL
- LANZAROTE TOURISM
- MEDOV SRL
- MH BLAND

- MMS
- PAN MARINE GROUP
- PENINSULA TOURS
- PEREZ Y CIA
- PUERTOS DEL ESTADO
- SALAMIS SHIPPING SERVICES
- SAMER & CO SHIPPING
- SCANDINAVIAN NEAR EAST AGENCY
- SEAWAY SHIPPING & TOURIST SERVICES
- TENERIFE TOURISM CORPORATION
- TERMINAL NAPOLI SPA
- TRAINOSE
- TRANSCOMA CRUISES
- TURA TURIZM
- TURISME DE BARCELONA
- TURKISH CHAMBER OF SHIPPING (TCS)
- VAR PROVENCE CRUISE CLUB

Bastia/North Corsica

In addition to the X-Ray control system installed last year, the Port of Bastia has recently strengthened health safety measures adding thermal scans to monitor the temperatures of every disembarking passengers.

Every passenger must be masked in both terminals, and common areas are disinfected several times a day, plus a 30 people quota has been defined in order to ensure physical distancing and to prevent Covid-19 spreading.

These different tools allow the port to protect the passengers and local people and to guarantee the sustainability of cruise activity recovery. Port of L'Île-Rousse has implemented the same health

safety process.

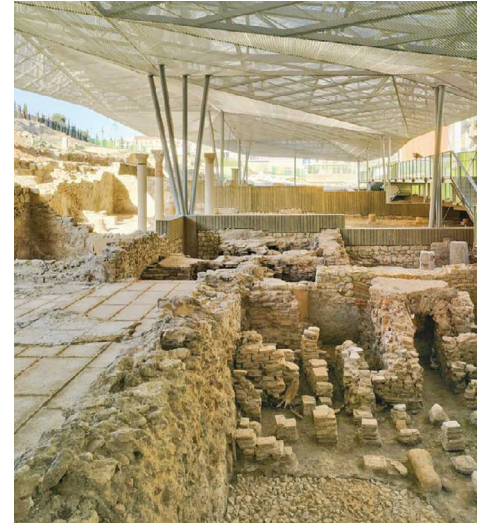
A new website (www.corsica-cruise.com) offering enhanced digital content is proposed plus the port has joined the ZIELIA platform to upgrade and consolidate exposure.

New sustainable shore excursions focused on eco-responsibility, wellness and outdoor activities in small groups are being offered to the 18 cruise lines which have already planned to call in Bastia and North Corsica ports in 2021, and hopefully more.

MedCruise contact: Anne-Marie Spinosi
am.spinosi@bastia.port.fr



Cartagena



The Port Authority of Cartagena is working on a protocol to reduce the risk of Covid-19 transmission in the Cruise Terminal during a cruise call. The port will provide information in multiple formats and languages describing the sanitary measures, such as wall and post mounted signs, floor markings and a loudspeaker system. It will carry out temperature screening, keep physical distancing, control the flow of passengers within the terminal. As well as providing facemasks, hand sanitiser and waste reception facilities, ultraviolet light technology will be used for disinfecting luggage. There will be enhanced cleaning of the cruise terminal by disinfecting the building before and after a cruise call. The terminal will have a waiting room, consultation room and isolation area for potentially infectious passengers or crew.

The Tourism Board is certifying the tourist attractions located in Cartagena and throughout the region to become Covid Free Spaces in preparation for a return to cruising. Cartagena Port of Culturas has already implemented different measures and procedures that comply with the regulations and recommendations issued by the authorities.

One of the most important archaeological findings of Cartagena is the District of the Roman Forum. It has received over 375,000 visits since its opening in 2012. Located in the city centre, in the archaeological site of El Molinete, it is made up of a thermal spa complex and an atrium.

After years of investigation, works and conservation, the Atrium building, the Isis Shrine, will open by the end of 2020 as the new Museum of the Roman Forum, gateway to this remarkable site.

The three-story building will house the museum that will take you through two thousand years of history, to learn about the way of life of El Molinete District and of the city of Cartagena, since the foundation of the city until the 20th century.

MedCruise contact: Hortensia Sanchez
hortensia@apc.es

Burgas



The Port of Burgas is following all of the recommendations of the World Health Organization, the Ministry of Health of Bulgaria and the European Institutions for protection against Covid-19.

A special crisis headquarters at the port, is implementing all the prescribed health measures and protocols. The level of security has been increased and health checks are being made on all employees and visitors to the port.

Currently only cabotage sailings are being undertaken but in October, Mano Maritime's cruise ship is due to visit the Port of Burgas. All health and safety measures will be taken to ensure a memorable excursion and stay for the

tourists. In 2021, a significant increase in cruise visits is expected.

"Port Burgas" JSC can accommodate large cruise ships: the modern Marine Station has 2 berths, totalling 330mtr in length, with a depth of 10mtr. There is also a recently renovated 100-year old port warehouse 'Magazia 1' and a second passenger terminal.

New for Burgas is a planned 50 seat Planetarium located in front of the Maritime Station offering the opportunity to see and feel the magic of the night sky and the mysteries of the Cosmos through 3D projections.

MedCruise contact: Stoicho Dimov
st_dimov@port-burgas.com

Port Authority of Central Tyrrhenian Sea



Port of Salerno

The Ports of the Central Tyrrhenian Sea System, Naples, Salerno and Castellammare di Stabia have not stopped their fundamental activities during the lockdown period caused by the Covid-19 pandemic.

The main infrastructure works at the ports are ongoing; at Port of Salerno the widening of the port entry basin, an ambitious work which consists of raising the head of the inner breakwater (up to 100mtr length) and in the 200mtr extension of the outer breakwater is about to start. The expansion work aims at allowing bigger cruise ships to enter the port, as well as improve the safety conditions and usability of the whole harbour enhancing a safer entrance and manoeuvring.

The seabed dredging work is a crucial activity aimed at allowing the safe entrance and

manoeuvring of new generation ships; the project involves both the deepening of the present port seabed and the dredging of the entry basin. Dredged materials would be released into sea water.

At present the first phase of the work has been completed and the second phase will start in November 2020, expected to complete in Spring 2021.

Security plans at Naples Cruise Terminal have been revised in accordance to recent laws concerning cruise passenger reception. Within the historical building of Naples Cruise Terminal, a brand new hotel has recently been opened: The Smart Hotel, with its 67 rooms, is situated between the port and the city centre.

MedCruise contact: Barbara Casolla
b.casolla@porto.napoli.it

Ceuta



The city of Ceuta in general and the Port of Ceuta in particular are taking into consideration all the indications the health authorities are ordering, with regards to the recent Covid-19 situation. With regards to welcoming cruise passengers in the port, all tourists will be subjected to primary sanitary controls and the port's defined protocol together with the local authorities in case of a suspected case of coronavirus.

The City of Ceuta's Tourism Services arm has designed a new package of excursions consisting of seven new itineraries where tourists can enjoy

a renewed vision of the city. It has different routes based on mythology, gastronomy, the most important landmarks in the city, the Mediterranean Maritime Park, The Royal Walls, Portuguese Ceuta, etc.

The groups for these visits will be reduced so as to respect the health protocols against Covid-19. The routes will be available in English too. This project is focused on local residents but it is also available for national and international tourists.

The Port Authority of Ceuta is working together with the city's Tourist Services to welcome passengers from the ship with optimal service of attention in the port area, setting up an information point at the berth so as to facilitate their arrival and provide them with important tourist information.

MedCruise contact: Victor M. Jimenez
victor@puertoceuta.com

Castellon



The Port Authority of Castellón's Committee on Workplace Health and Safety has put in place concrete actions to tackle Covid-19, such as space signalling, informative posters, special rubbish bins for disposable masks and gloves, indications of capacity in all rooms and offices, a donation of hand gel and masks for all employees, an ozone canon to clean vehicles, and separation screens for those working in public service positions.

The destination of Castellón is ready to welcome cruise passengers in a post Covid-19 context adhering to the published guidelines and recommendations in the ICTE (Institute for Spanish Tourism Quality) guide.

With more than 1,200km of walking trails, more than 1,000km of mountain bike trails, Castellón is perfect for cycling and hiking, added to this the 120km of coastline suitable for water sports such as canoeing, yachting, sailing, water skiing, diving.

The trails of the province of Castellón give hikers a wide knowledge of the lands during their walks, a chance to discover the natural Mediterranean heritage, its culture and inhabitants, within a unique landscape set in the second-most mountainous province of Spain which houses numerous ecosystems that unite to create a varied, unique and spectacular landscape.

The province of Castellón has an abrupt landscape, with high mountains that easily exceed 1,000mtr in height and which extend out to the Mediterranean coast. This varied orography, its proximity to the sea and the height of its mountains, make it a pleasing and spectacular landscape to be discovered by means of more than 1,000km of signposted mountain bike trails that are frequented by sports and nature lovers for a considered approach to the rugged nature of the province. The website of the Castellón Tourist Board (www.turismodecastellon.com) provides information on nineteen trails that run through the entire province, along with information on difficulty levels, gradients, trail type, distance, profile, map, track, images, waypoints, etc.

MedCruise contact: Susana Soria
ssoria@fundacionportcastello.com



Cyprus ports

At the cruise ports of Cyprus, Larnaca Port is implementing all the directives and protocols regarding Covid-19 and cruising. In particular, the Passenger Terminal has signs, directions and other safety means for post Covid-19.

As for Limassol Port, DP World Limassol (DPWL) is in collaboration with the Deputy Ministry of Tourism in order to further promote the cruise sector branding and shall take further initiatives and Covid-19 preventive measures moving forward and during the coming months as tourism starts picking up and activities resume. The port is following all the state restrictions and guidelines as well as introducing internal and external Covid-19 protection management

procedures along with use of mask guidelines, systematic internal communication in regards to Covid-19 preventive measures plus protection procedures for port users, visitors and staff.

DP World Limassol has already launched a series of actions that promote the sustainable development of cruise activities, while the inauguration of the new cruise terminal at the Limassol port was a highlight for the Cypriot tourism sector.

MedCruise contact: Anthia Klerides
antkliridou@cpa.gov.cy

DP World Limassol contact:
Lazaros Charalambous
lazaros.charalambous@dpworld.com



Port System Authority of the Eastern Sicilian Sea



After the closure due to the Covid-19 pandemic, following the national legislation the terminal has implemented its security protocol in order to make its spaces safe for those who use them, whether they are passengers, employees or crew. The continuous sanitization of the rooms is accompanied by the obligation to wear a mask in closed spaces, the limitation of contacts between ground and embarked personnel, the sanitizing dispensers located at the main entrances and the signs that inform the public of the correct anti-contagion hygiene rules to follow. Catania Cruise Port is ready to welcome cruise ships and cannot wait to start again.

To enter Sicily as tourists between the 8th June and 30th September 2020 it is necessary to register on the regional website siciliasicura.com. The other guidelines are: continuous cleaning, the purchase of goods and services online is promoted, everywhere there are messages on the correct hygiene rules to be put in place and it is mandatory to wear a mask in closed spaces.

A new service of interest and appreciation is the free Wi-Fi, already available: now Catania Cruise Port offers its guests a free wireless connection, fast and always available. In the meantime, innovative services related to the green economy are being studied, such as the rental of eco-sustainable vehicles for a visit to Catania and its surrounding areas. Furthermore, new collaborations will bring to the terminal more typical products, dedicated merchandise and, when possible, shows for cruise passengers and crew. Although Sicily has been one of the Italian regions least affected by the pandemic, the protocols are in force so that everyone, tourists and local inhabitants, can enjoy the Sicilian wonders safely. Whether you want to relax in the sea in summer or ski in the snowy slopes of Etna mountain during the winter, Catania is here waiting for you, together with its delicious cuisine, its traditions and the beauty that characterizes its territory.

MedCruise contact: Ilaria Tomasi
tomasi@adspmaresiciliaorientale.it

Dubrovnik



The Port and the City of Dubrovnik are jointly investing efforts in rebuilding cruise tourism, discussing and preparing local protocols and guidelines in the destination of Dubrovnik in accordance with the EU guidance for cruise ship operations. Meanwhile the port of Dubrovnik has ensured lay-up accommodation for two cruise vessels during this challenging period and are looking forward to post-COVID-19 resumption of cruise operations in August starting with slow motion cruise market awakening, hoping that this world crisis will be short-term and

expecting full market recovery in 2021 when Dubrovnik – the Pearl of the Adriatic will continue to be an unavoidable Mediterranean cruise destination.

At the 2nd edition of the MedCruise Awards that took place online on 11 August 2020 Dubrovnik Port Authority has been chosen as the Port showing the greatest commitment during the pandemic from the Adriatic Sea Region of MedCruise.

MedCruise contact: Hrvoje Kulusic
dpa.hrvoje@portdubrovnik.hr

Egyptian ports

All the Egyptian cruise ports disinfection procedures are carried out by the State Quarantine Department, while the authorities have advised that all must keep a minimum contact and use PPE

according to the advice issued by the World Health Organization (WHO).

Across Egypt, the ports are preparing to return to post Covid-19 cruising by adhering to all precautionary measures, according to the

strict instructions received from the International Maritime Organization (IMO) and the WHO.

The ports authorities in Egypt are examining as well the guidelines of the European Maritime Safety Agency (EMSA) published at the end of July 2020, in order to apply any additional measures that may be required by the cruise lines & to follow the same guidelines as the

European ports and destinations regarding health and safety regulations.

Amid post Covid-19 preparations, Alexandria Port Authority is getting ready to launch the operations of its new cruise terminal at the beginning of 2021 with an area of 8,725sq mtr, built on 3 floors with the ability to accommodate 5,000 tourists at once, 4 berths with a total length of 820mtr and depth of 9-12mtr capable of accommodating 4 large cruise ships simultaneously, car parking with capacity for 80 buses or 350 cars and a mall consisting of 107 shops, 5 restaurants and 3 coffee shops.

However, on land the tourism has resumed with 48 flights and thousands of tourists on board which landed in Egypt since the international flights are back to operate their planes to different destinations. Therefore, tourists from European countries such as Ukraine, Hungary, Switzerland, and Belarus have visited Egypt in late July and returned home safely, with all the safety procedures being carried out at all times.

MedCruise contact: Karim Mohamed M. Youssef
Karimyosef58@yahoo.com



Gibraltar

The Port of Gibraltar's new security protocols are in line with the ISPS code requirements. There is a Covid-19 declaration in addition to the Maritime Declaration of Health that all vessels will receive from their local agent which needs to be submitted with the pre-declaration

information to the port.

Gibraltar's safety has always been an important attraction for our visitors. Now more than ever it is important that visitors feel secure with us, when they visit this magnificent destination.

A series of measures have been

implemented and will be taken, to make visitors feel safe when they visit The Rock. For full details please visit the link as this is being updated on a regular basis <https://www.visitgibraltar.gi/covid-19>

There are a number of shore excursions available at Gibraltar that are outdoors and help promote a lot of these new procedures. EBike-Gibraltar provides premium guided tours. The bikes offer the opportunity to explore Gibraltar by bicycle to a wider range of ages and fitness levels, all of whom can now enjoy this activity together. Although pedalling is still required, the silent and emission free motor takes all the strain out of cycling, allowing the rider to go further, steeper and see more. The following tours are available to cruise operators: The Rock Around Tour - Explore the historical defences on the west coast of Gibraltar to the most southerly tip, Europa Point, and return to the city via the eastern coast road absorbing the Rock's Mediterranean views and sandy coves. The Rock to The Top Tour - Enjoy breath-taking views across 3 countries and 2 continents, explore Gibraltar's fascinating history and be introduced to our most famous inhabitants, the Barbary Macaques – the only free roaming monkeys in Europe!

MedCruise contact: Suyenne Catania
Suyenne.catania@gibraltar.gov.gi



Heraklion



Following Greek national laws, Greek ports were able to reopen for cruise activities from 1st of August. Heraklion is designed as one of six ports to be able to welcome homeporting cruise ships. Prior to this general guidelines of the European health protocols were already being implemented in port areas.

Heraklion Port is in daily contact with the ministries of health, tourism, transport and local authorities, so that all actions can be carried out in a secure way, without creating any problems to public health.

The Port has taken all measures requested by Heraklion Health Services which are; training and certification of all the involved personnel of the port regarding the precaution, the

prevention measures and the implementation of the health protocols regarding the Coronavirus (SARS-CoV-2); increase of disinfection frequency in public places, WCs etc.; Installation of all necessary personal protection measures (gloves, masks, overalls, goggles, antiseptics); ensuring measures for health protection are implemented on a case by case basis, each case coordinated by the National and Local Health Organizations in coordination with the Civil Protection Services and in cooperation with the Hellenic Coast Guard and Heraklion Port Authority; Installation of special signs and information videos regarding COVID-19 at terminal monitors in all areas of the passenger stations; Installation of

disinfection stations in all public areas of the port; and Configuration of a special isolation area.

Going forward any new measures implemented by port health authorities will be followed.

With regards to new development at the port, the new administration is working hard on a new business plan which includes a substantial renovation of cruise port facilities as well as the construction of a new medium size yachting marina. The redesign of the cruise port and the construction of a new modern passenger terminal, which will incorporate European directives (Schengen, etc.), are a top priority.

Heraklion is surrounded by a formidable medieval wall, which was used to protect it from enemies. Owing to this, the city enjoyed the reputation as a well-fortified state in the Mediterranean basin. It stood up to a siege from the Turks for 21 years, but was finally seized in 1669 after its betrayal by a Greek-Venetian engineer who informed the invaders of the walls' weaknesses at east and west bastions. After a strategic renovation of the Venetian walls by the municipality of Heraklion, visitors can now walk along the top of these walls and enjoy the view of the city, reaching the Tomb of the Cretan writer Nikos Kazantzakis (1883-1957), where it is written: "I hope for nothing, I fear nothing, I am free".

MedCruise contacts: Kyriaki Kampana
kkampana@portheraklion.gr

Igoumenitsa

The Port of Igoumenitsa has undertaken measures according to the guidelines of the Greek National Health Service, considering that Igoumenitsa Port is the western gate for arrivals from Europe connecting Greece with Italy with regular sea connections.

From July 1, 2020, the Greek government has determined how the country will welcome travellers, carrying out the necessary diagnostic screening and keeping everyone safe throughout the season.

All passengers travelling on international arrivals to Greece are required to fill in and electronically submit the compulsory Passenger Locator Form (PLF) 48 hours before departure.

Depending on their QR code/confirmation, travelers are directed either to the screening area where they will be tested for Covid-19 by a trained health team of the Greek National Health Service or to the exit.

Antiseptic is available at many points within the Port premises and in all toilets for passenger use at all their travel stages, both when departing and arriving.

All passengers and members of the Port staff are advised to keep a physical distance of 2mtr at the port premises. Special markings and visual instructions on screens and banners are in place to that end.

There is a new seating arrangement in all



waiting areas, which allows the minimum distance to be kept. In addition, it is recommended that passengers leave a vacant seat between them.

The measures are communicated both visually and through audio announcements.

Wearing a face mask is mandatory during your arrival and your stay within the port terminal areas.

Hand sanitisers are available at many points of the Arrivals area, for use by passengers and

members of the staff.

All facilities, devices, equipment and surfaces at points of contact are regularly cleaned and disinfected with special cleaning products.

These procedures are for extra protection and prevention; the port supply and install an Elevated Skin Temperature monitoring system, with an automatic disinfection system.

MedCruise contact: Anna Pyroti
apiroti@olig.gr

Koper

Port of Koper is following the Covid-19 protocol of actions, which is stipulated at national level. There are detailed procedures for cases of an outbreak onboard a cruise ship that calls at the port. Prior to arrival a ship must submit a health declaration and in case of suspicion of infection the epidemiologist of the National Institute of Public Health takes over the management of the procedure.

Currently the whole destination of Koper is focussing on the 2021 cruising season. Port of Koper prepared a Covid-19 Port management plan in order to deal in an appropriate way with maritime traffic and shore operations. Some shore excursion agents have prepared a few new products mainly based on small groups. The goal



is to perform excursions in accordance with safety measures. The Slovenian port is prepared for new cruise ship calls and passengers, and will abide by social distancing, the use of face masks and hand sanitiser and other protocols necessary.

MedCruise contact: Bojan Babic
bojan.babic@luka-kp.si

Lisbon



The Portuguese port of Lisbon has been working with the terminal operator and the local health authority in order to put in place a health and safety protocol to be prepared for the resuming of cruise activity, to ensure they are fully prepared to welcome cruise passengers and that cruise operators and their guests feel safe when they arrive to the port of Lisbon. Although all Portuguese ports have been closed for disembarking of cruise passengers since 13th March the port says it will be ready when the cruise ships arrive.

The port continues to receive cruise ships for technical calls and special layup.

Meanwhile Port of Lisbon is working on a feasibility study to implement onshore power supply for ships in port and also working on other environmental issues like the implementation of an air quality measurement station, projects that are hoped to be implemented as soon as possible.

MedCruise contact: Ana Lourenco
alourenco@portodelisboa.pt

Port Network Authority of the Ionian Sea – Port of Taranto



The Port of Taranto aims at strengthening the port-city's brand as a Mediterranean cruise destination by launching a project which brings together the local cruise cluster in order to craft a new shared vision of hospitality. A protocol of measures to prevent Covid-19 will be among the outputs of the project and will be realised with the collaboration of the local health authorities.

Meanwhile, the Port Network Authority has been consistently working to carry out the planned works on the East side of Pier 1 to enable the port of Taranto to finally have a dedicated cruise berth. As for the head of Pier 1 (Molo s. Cataldo) infrastructural works will be officially completed in August. The requalification of this key asset of the port will allow the head of the Pier to serve both tourism and commercial purposes.

The new Falanto Port Service Center will be ready by the end of the year to serve as a cruise terminal and provide the guests with meet-and-greet services. The increasing popularity of Taranto as cruise destination sees cruise call bookings peak next year, with a foreseen traffic of about 30,000 transit passengers.

Last December Taranto was the setting of the action-packed film, *Six Underground*, by Hollywood director Michael Bay. This summer season the history and culture of Taranto are an inspiration for high couture fashion as the Dior Maison shaped pieces of its cruise collection after the impressive gold headpieces, necklaces and earrings displayed at the National Archaeological Museum of Taranto. These precious artifacts were created when Taranto was the capital of the ancient Magna Graecia and can be admired by visitors in the Museum's halls as truly timeless art masterpieces.

MedCruise contact: Silvia Coppolino
Silvia.coppolino@port.taranto.it

Madeira ports

APRAM, S.A. is developing and finalising its own Covid-19 Management Plan, for the port infrastructures of Funchal and Porto Santo and the region has also already implemented a Plan for Good Practices in the Madeira Tourism Sector, according to specifications for all tourism activities.

Madeira Airports and Ports are open and it is compulsory to have a negative test result to Covid-19 when arriving into the region (or to do a test up on arrival) and to fill out an epidemiologic

survey. Cruise calls are currently only admitted for technical reasons and are always led by the Regional Health Department.

The port authority carried out the first operation for crew exchange in mid-July and had a positive performance of all entities involved, including carrying out tests on crew members in a dedicated room, at the Funchal port terminal.

MedCruise contact: Patricia Bairrada
comercial@apram.pt



Marseille



The Port of Marseille is a major shelter port for cruise ships, ferry and ro-ro vessels. During the Covid-19 crisis, 16 ships were in lay up, and currently 8 ships are docked at the port, two of them at the shipyard.

In the meantime, the port and terminal teams are together implementing health and safety protocols. In the port and terminals, protocols are controlled by the Regional Health Agency and meet all the standards on required new measures.

Shore power is still under development for ferries, ropax vessel and cruise ships at the French port. It is planned to equip four berths by 2024 with sustainable shore power system, able to connect two cruise ships simultaneously, supplied by sustainable electricity.

Ponant cruise line has adapted its offer, created new itineraries and developed enforced sanitary protocols according to new health measures to resume cruises in France this summer, with turnaround in Marseille from July to September every Saturday, and calls in Port Saint Louis du Rhone, Cassis and La Ciotat.

This desire to take over by the cruise company as well as the work carried out with the different destinations, local government and professionals highlights the fact that Marseille Provence is ready for a full resumption of cruise activity.

MedCruise contact: Hélène Lebas
hlebas@marseille-cruise.com

Malaga



The Port of Málaga is working hard to be ready for the time when cruise ships are able again to visit our destination, as cruise traffic has been one of the most affected during the health crisis.

In the cruise terminals, Málaga Cruise Port, subsidiary company of Global Ports Holding managing the cruise facilities, has prepared their own Safety and Health protocols, which are already being distributed among cruise lines and other stakeholders. The company has also been a pioneer in obtaining the 'Safe Travels' Stamp, as safe infrastructures preventing Covid-19, granted by the World Travel & Tourism Council, the leading global association in the sector, as well as the 'Responsible Tourism' quality stamp, granted by the Ministry of Industry, Commerce and Tourism of the Government of Spain, a certification recognising the responsibility and the effort of the company to create a safe environment to generate trust among companies related to the industry as well as visitors.

The Port Authority of Málaga is also gathering protocols from all companies providing services in the facilities related to cruise traffic, and the destination Málaga, Costa del Sol and Andalucía, as a well-known and experienced tourist destination, is implementing measures for citizens and visitors, to avoid the spreading of the virus. In fact, the city of Málaga has also recently obtained the WTTC's 'Safe Travels' Stamp, guaranteeing it is one of the safest destinations in the world.

The aim of the Port and destination Málaga is to provide a Covid-19 Safe Full Experience, all throughout a ship's call in Málaga: from the terminal to the shorex destinations, providing successful and lifelong experiences to our visitors.

MedCruise contact: Jesús Peña
comercial@puertomalaga.com



Motril-Granada



Alpujarra Barranco de Poqueira

The Port of Motril-Granada had implemented all the protocols and measures with regards to Covid-19 to

assure the safety of our passengers and the commitment to recover the trust of our clients. The destination is ready to receive guests

when the authorities will allow. All the cruise services for the passengers: monuments, tourism office, restaurants and shops and other services, have implemented all the recommendations of the Tourism secretary of state based in the WHO guide and EU.

Reacting to the recent outbreak and the need for social distancing the cruise community of the port of Motril has developed some new outdoor activities. Four new hiking and trekking routes – Almuñecar, a Roman aqueduct route; Salobreña, a subtropical microclimate tour; Alpujarra, hiking with a vantage point; and Motril City, soft hiking sugarcane factories and subtropical crops.

Also on offer are biking tours in the Costa Tropical of Granada as well as two golf courses in the region; Los Moriscos Golf Club, an 18-hole course located close to the coast with both sand and water hazards, and Club Santa Clara Golf Granada, in the municipality of Otura. An 18-hole course with views of Sierra Nevada plus leisure club with spa, gym, heated and outdoor pools, paddle tennis courts, dry sauna and Turkish bath.

MedCruise contact: Lorenzo Vera Franco
lvera@motrilport.com

Port Authority of North Tyrrhenian Sea



measures to be taken in the passenger terminals, marine Stations, embarkation and disembarkation points in the Port of Livorno. The document sets out disinfection procedures, interpersonal distancing, security controls, mandatory use of face masks and measurement of body temperature in the passenger areas, and the use of online booking systems.

More specifically, Porto di Livorno 2000, the Company handling the passenger Terminal, has issued a specific protocol regarding the ferry passengers (as these will be the first to return),

which includes; temperature screening of passengers embarking on foot or by car and of everyone entering the terminal by staff trained for that purpose; clearly marked points of entry and exit to avoid bottlenecks and ensure social distancing; the presence of a medical station/ambulance/medical personnel; and the regular disinfection and sanitation of premises with certified products.

As regards cruise ships passengers, a set of specific guidelines is under elaboration in collaboration with the other Italian terminals and operators.

Regarding the ports of Piombino, Portoferraio, Rio Marina and on the Cavo jetty, the North Tyrrhenian Port Network Authority has adopted a specific Prevention and Protection Plan (PPP). The document contains the risk analysis and the necessary measures for containing the spread of Covid-19 both within the public areas of Piombino's integrated Port Services Centre and its passenger terminal facility and in the areas allocated for passengers and their vehicles while waiting for ferry departures.

The current situation of the pandemic makes it difficult to predict when cruise ship activity will resume. One can expect two scenarios: a positive one, based on the possibility that cruise ships will set sail again in September and a negative one, based on activities resuming in January 2021.

In both the cases, the net loss that Livorno port could incur over the year would include three items of expenditure: passengers, crew and technical-nautical services.

With this in mind, the Municipality of Livorno, the Port Network Authority and the Chamber of Commerce convened a Direction Cabin with the aim of promoting joint strategies and measures to contain and tackle the economic and social impact of the post Covid-19 crisis on the territory.

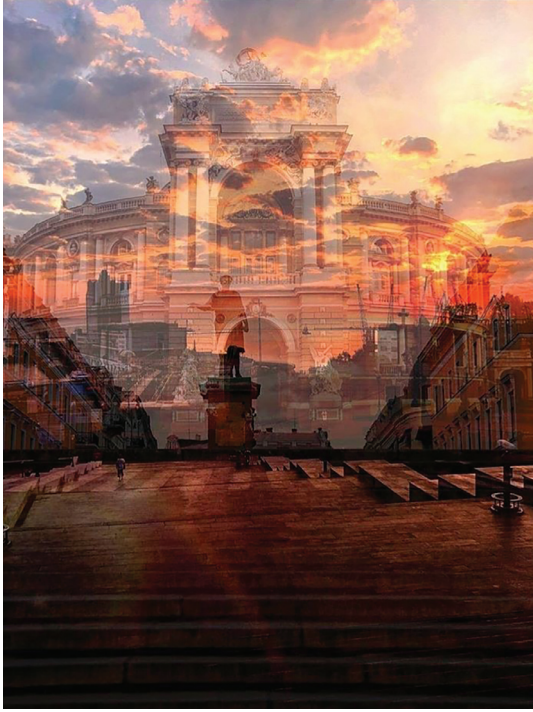
MedCruise contact: Francesca Morucci
f.morucci@portaltotirreno.it
Serena Veroni
s.veroni@portolivorno2000.it

As a consequence of the pandemic emergency Covid-19, the North Tyrrhenian Port Network Authority studied measures to prevent and to react to the virus surrounding both port workers and port users.

In Livorno, a conference was held with the participation of the Region of Tuscany, the Municipality of Livorno, the harbour office, health authorities and terminal operators in order to define a prevention protocol in the port area. Consequently, the North Tyrrhenian Port Network Authority has issued a set of guidelines for the containment of Covid-19 -

Odessa

A health protocol is being actively developed at Odessa Port, which will be applied to passenger cruise ships calling at the port during the post Covid-19 period. This protocol is based on documents regulating the rules for the calls of passenger ships into European ports (EU Healthy



Gateways, EMSA-ECDC Cruise Guidance), considering the state regulations of the Cabinet of Ministers of Ukraine (Resolution of the Cabinet of Ministers of Ukraine No. 392 dated June 25, 2020), recommendations of Ministry of Health of Ukraine and the Laboratory Center of Ministry of Health of Ukraine on Water Transport. The health protocol will include a Contingency plan for the port, a step-by-step course of actions to be followed in case of an outbreak of Covid-19 takes place onboard a ship

The city authorities, represented by the Department of Culture and Tourism, have developed a number of requirements, to slow the spread of the infection. These requirements are; reduced capacity of sightseeing buses, mask-wearing, regular disinfection, temperature screening, compliance with social distancing, re-equipment of ventilation systems in enclosed spaces, etc

Given the border closures in many countries, the main focus is on the development of domestic tourism in Ukraine. New, previously unexplored, tourist routes are being planned, the Odessa region is being actively explored and new tourist products are being offered within the country.

MedCruise contact: Julia Strikh
syi@ods.uspa.gov.u

Portofino

The Italian port of Portofino is ready to welcome back cruise ships into a clean and safe environment now that cruise operations have resumed. The port has invested in temperature scanners and sanitiser dispensers to use in order to keep everyone using the port safe.

Portofino is not only a picturesque village; it's also a regional park that includes the Portofino Promontory, an area rich in biodiversity. The

port has a new experience on offer to visitors when cruising can return; La Portofinese - an eco-farm excursion including an agricultural farm visit with local food, honey and wine tasting, cooking classes, biking and hiking tours, a true wellness experience from beginning to end.

MedCruise contact: Giorgia Collalti
g.collalti@marinadiportofino.com



Piraeus



Piraeus Port is in constant communication and cooperation with major cruise lines, reviewing industry needs and adapting to this evolving environment. Working towards the safe restart of cruise, Piraeus Port guarantees diligent application of all health protocols that National and EU authorities may deem necessary.

Started in February 2020, the Cruise terminal South Expansion project is ongoing, a project with initial budget of €120 million, co-funded by the European Regional Development Fund. This project will allow Piraeus Port to host 2 new generation cruise ships of over 280mtr long, added to the already 9 berthing positions in place. The project is estimated to be completed by autumn 2022. The port is also studying the development of a new 'Premium Cruise terminal', dedicated to luxury cruise vessels up to 200mtr LOA and with a capacity of up to 500 passengers.

The world has changed irrevocably but at Piraeus Port Authority S.A., they are dedicated to focusing on the bright side of things as the world keeps spinning. Elements that have made cruising in Piraeus so special have not been affected by the pandemic. Witnessing Ancient Athens is still a once in a lifetime adventure, and the Acropolis will remain intact as it has for the past 2,500 years; Greek hospitality will remain a unique experience.

MedCruise contact: Theodora Riga
commercial@olp.gr



Rijeka

Croatian ports are currently open to international cruise ships carrying up to 200 passengers. Crews and passengers of cruise ships on international voyages which are not prohibited by the decision from entering seaports and inland ports are obliged to comply with general anti-epidemic measures and special recommendations and instructions of the Croatian Institute of Public Health. Currently, all EU/EEA nationals and persons with permanent residence in EU/EEA country

can enter Croatia freely, without restrictions. Third country nationals still have some restrictions in place: they can enter on business or tourism related reasons only. All other third-country nationals (including the USA and Canada) are allowed to enter Croatia for tourism (with a paid reservation) or for business, but subject to new health conditions issued on July 10 (negative PCR test or 7-14 days self-isolation).

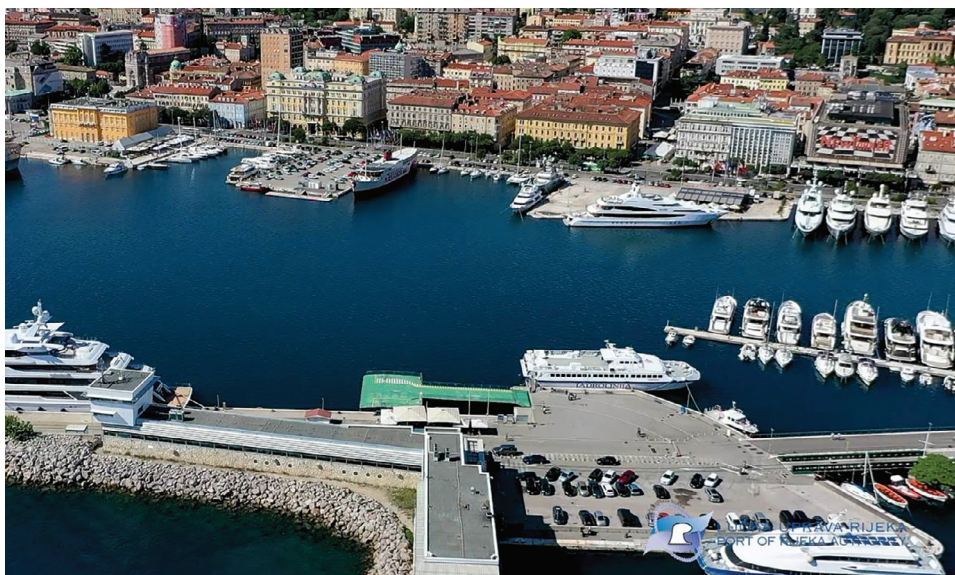
The Port of Rijeka has making preparations to welcome cruise ships back following the EMSA

Guidance on resumption of cruise ship operations in Europe, especially recommended elements on which the (cruise) company and the port/terminal receiving the ship should agree in advance, including cooperation in case of a Covid-19 outbreak on board. Strict adherence to the known personal protective measures such as physical distancing, respiratory etiquette, meticulous hand hygiene and avoiding touching the face, nose, eyes and mouth are important to reduce infection risks. The use of a face mask should be considered as a complementary measure, especially when physical distance cannot be maintained, as a way to control for droplet spreading for both crew and passengers.

Due to its good epidemiological situation despite the pandemic, Croatia has positioned itself as a safe and desirable tourist destination and has passed the 2 million mark for the number of tourists to visit in July.

The Kvarner Region, where Rijeka lies, has been named as one of the world's top regions for travellers in 2020 by Lonely Planet. Rijeka and its surrounds have everything that a first-rate tourist region needs; landmarks, rich cultural programs, entertainment, fabulous beaches, romantic towns and villages and stunning nature. Rijeka provides ample opportunities for amusement, relaxation and urban exploration.

MedCruise contact: Snjezana Papes
snjezana.papes@portauthority.hr



Souda/Chania

Despite the lockdown, Souda Port Authority has continued with only slight delays on the development of its Master Plan focusing on cruise port infrastructure, namely the passenger terminal. Regarding the restart of the cruise season for the rest of 2020 and for 2021, the port is ready to implement the specific and approved protocols by the State Authorities.

Souda Port Authority is a stakeholder of Chania's tourism and is making every effort

towards the readiness of the destination in the post COVID-19 era. As a destination, Chania is already open for the tourist season ensuring to follow all the necessary measures to welcoming visitors through Chania International Airport and Port of Souda. The most important thing is the readiness of all professionals involved in the cruise business such as tour operators, travel agents, coach owners, tourist guides, rent a car operators, taxis, museums, shopping areas, organised

beaches, etc, ensuring the best results for the upcoming restart.

Souda/Chania can offer new shore excursions with a social distancing concept such as Ancient Aptera experience (only 8 minutes from the port), Elafonisos isolated beach life, Samaria Gorge limited crossing and the Old town of Chania.

MedCruise contact: Stella Manioudaki
stelman@ltnx.gr



Port Authority of Southern Adriatic Sea Tarragona

Extraordinary measures have been taken to limit gatherings and guarantee social distancing in order to allow cruise operations as well as maritime connections with Albania and Greece in this subsequent phase of this emergency. Although cruise traffic has been one of the most affected during the health crisis, Southern Adriatic Sea Port Authority has worked to implement the sanitary measures that guarantee the safety of ships, crew and passengers. Since the early days of March, sanitisation and disinfection of common areas have been planned and carried out as well as intensified routine cleaning.

It is crucial to prepare for the recovery phase by both supporting port undertakings during the

post lockdown and implementing the ferry and cruise terminals, also from the infrastructural point of view, in order for measures to be increased for the benefit of users' and operators' health.

There is talk of Costa Cruises resuming cruising in mid August and Bari is hoping to be one of the ports of call in its East Med itinerary.

Port of Bari is planning a new passenger terminal at Pier 10. The 2,200sq mtr terminal will contain 10 meet and greet desks, baggage area, bar and services. It will cost an expected Euro7m and is due to be completed in first half of 2021.

MedCruise contact: Anna Carlucci
a.carlucci@adspmam.it



The Port of Tarragona continues to work to be able to restart the cruise season as soon as possible, as long as the health conditions allow it and giving full priority to people's health. The port is designing new health protocols and the implementation of measures to offer a good experience during the call in Tarragona, safe for everyone and minimizing the risks.

Within the usual shorex portfolio, emphasis has been placed on those options in open spaces. It is also our aim to avoid crowded areas, and to promote smaller groups, that help to guarantee social distancing. Tourism companies are following the rules set by the government to guarantee important aspects such as social distance, capacity limits in closed spaces or the use of masks, to reduce the risk of infection. These measures are and will be adjusted by public bodies, based on the evolution of the coronavirus. The destination is gaining all this know-how that will definitely be a big plus for the future management of tourism. This current situation has also led to an improvement in aspects such as hygiene, digitalization and innovation, from which future post-Covid cruisers will benefit.

The Port of Tarragona is making steady progress in the construction of the Balears berth. The works on the pier, with a budget of more than 27m euros, officially began in April 2020 and will be completed within 14 months. This new infrastructure will substantially change the space of the Llevant pier for the berthing of cruise ships, as it will add an area of 4 hectares and 460mtr in length. The total berth line will be 700mtr, since, in 240 of these 460mtr, it will be possible to dock on both sides, doubling the number of cruise ships that can dock simultaneously and also accommodate the largest cruise ships.

The Port of Tarragona has been the first port in Spain open a reflection on the "new normality" in cruises organizing a webinar under the title "How to prepare as a destination for the arrival of cruises on the "new normal" stage". The webinar was aimed mainly at agents related to the tourist destination of cruises of Tarragona-Costa Daurada and had participation of more than 60 attendees. The speakers included Luis de Carvalho, CEO of Bermello Ajamil & Partners Europe; Ramon Hurtado, Global Product & Operations Manager of Intercruises Shoreside & Port service; and the president of the Port of Tarragona. Josep M. Cruset.

MedCruise contact: Gordana Mrcela
info@portauthority-sibenik.hr

Tangier



Tangier City Port is now ready for reopening and to safely manage all port traffic. At local and national level, all the necessary measures have been taken to successfully tackle the development of the pandemic, and to welcome cruise passengers.

Tangier is a city rich in history and culture. All development and improvement activities related to the historical infrastructures in the port area have not ceased and/or suffered delays during the Covid-19 period.

Among the latest achievements are; the Port Center square which is located at the exit of the maritime station, Other renovations of streets and old buildings in the old city of Tangier (Médina)) to highlight the rich city's history, All the spaces at the foot of the old walls have been completely redone with gardens, paths, parking lots and lighting, plus work has begun on the creation of a museum dedicated to Ibn Battuta, a legendary figure considered to be one of the greatest travellers of all time, and an interpretation centre of the military heritage of Borj Dar El Baroud.

Morocco's frontiers have been closed and strictly controlled since March 12th to prevent the development of Covid-19, in this sense, Tangier City Port traffic has been suspended from this date (cruises, fast-ferries and yachting).

Several measures to combat Covid-19 have already been taken at the national level and within Tangier City Port area: Action Plan with specific procedures, individual and environmental measures including health and safety measures, risk & security, staff training, business signage for Covid-19.

MedCruise contact: Jamil Ouazzani
jamil@tangerport.com

Toulon-Var-Provence



While Toulon Bay is a shelter for some lay-up cruise vessels, the team remains also mobilized in the perspective of resuming operations, by contributing to various working groups (WG): Medcruise Post COVID-19 Committee of Experts, the French Med ports and the Cruise Lab WGs. (Cruise Lab is gathering French ports & destinations from metropolitan and overseas territories in the aim of sustain and balance the development of the cruise activity through the entire French territories).

Aside of the sanitary processes to be developed and implemented within the port area and beyond when activity will have resumed, the team is concurrently exchanging and contributing to adapt and rethink local tours and experiences so they can better fit to the PostCovid framework.

At the same time, if cruise ships and visitors are not yet allowed to circulate, Toulon is still promoting itself as an off-the-beaten-track port & destination, out of the crowds, where one can slow down the pace by enjoying the best of both Provence and French Riviera.

MedCruise contact: Delphine Beudin
delphine.beudin@var.cci.fr

Valencia

The Port Authority of Valencia is working in coordination with all its cruise community to prepare for the new post pandemic normality and to receive passengers as soon as Spanish administrations give the green light to cruising again in Spain. Questions like the importance of being informed and working in tune to be able to anticipate the resumption of the activity,

readapting the business opportunities in shore excursions and the implementation of all the safety and security measures have been widely discussed during these last few months. Valencia is focused on providing safe and secure experiences for cruise tourism.

In July 2020, Port Authority of Valencia accepted the offer presented by Baleària for the new passenger terminal. The concession

will be granted for 35 years, extendable to a maximum of 50 years. In accordance with the tender specifications, the new terminal will be used to serve cruise traffic as well as regular lines with the Balearic Islands and Algeria as well as ro-ro traffic. For this, the new terminal must have at least four berths, at least one of them to be 360mtr in length and another berth at least 250mtr in length. All berths must be equipped with a power supply network for ships. The terminal must be able to accommodate two cruise ships on the same day, one in the base port regime and the other in transit, and two ferry / ro-pax ships.

The shipping company Baleària, the only company that submitted a bid, plans to build and operate the new passenger terminal with a project that guarantees that 100% of the electrical energy required will be produced at the facilities themselves and will be of renewable origin: photovoltaic, wind, renewable hydrogen or biofuel. According to the project presented, the terminal will operate with zero contaminating emissions. The new passenger terminal has been designed to become a reference of sustainability in the environment of the port of Valencia and to generate added value to the seafront. The presented project includes the preservation of the heritage elements of this port environment that stand out for their historical value.

Global Ports Holding (GPH), one of the world's largest cruise operator, will oversee managing the cruise traffic in association with Baleària for this project.

MedCruise contact: Francesca Antonelli
comercial@valenciaport.com



Port Authority of Western Sicilian Sea



The Port System Authority of the Western Sicilian Sea has implemented a security plan to prevent the spread of Covid-19 inside the environments dedicated to transit passengers. This document includes sanitizing and guarantees anti-Covid 19 measures to protect passengers. The authority has also signed an agreement with the Italian Red Cross (Croce

Rossa Italiana) for handling passengers whose body temperature exceeds 37.5°C or with probable Covid-19 symptoms in all the four ports, where an ambulance service will be available at certain time of the day.

MedCruise contact: Daniela Mezzatesta
promotion@portpalermo.it

Zadar

Port of Zadar Authority is using this year, marked by the Covid-19 virus, for activities related to sustainable development in terms of developing projects for the implementation of renewable energy sources in the port area. In the next period, part of the parking areas will be covered with photovoltaic panels. Port of Zadar Authority is also considering the implementation of other alternative energy sources in other port areas. Regarding post Covid-19 cruising, the drafting of EU Directives related to the protection of passengers and port users is actively monitored, as well as the

instructions of local civil protection headquarters. From mid-July, cruise traffic is possible in the area of the Port of Zadar with certain restrictions - it is allowed to operate cruise ships up to a maximum of 200 passengers. Currently, Marella Cruises' Marella Dream is situated in Zadar in long-term lay-up mode and, from beginning of September, Port of Zadar Authority is expecting at least one more cruise ship in lay-up mode

MedCruise contact: Djoni Stambuk
dstambuk@port-authority-zadar.hr



Valletta



The months during which Valletta Waterfront was devoid of any business due to Covid-19 served as a time for Valletta Cruise Port to further invest in projects with the aim of further enhancing the appearance of this Maltese destination.

Of note is the inauguration of a €2m investment in bespoke canopy structures respecting the historic fabric of the Valletta Waterfront promenade with its nineteen historical 270-year-old warehouses, built by Grand Master Pinto at the height of Malta's baroque period where the Knights of St John and European merchants used to unload their wares.

Minister Farrugia Portelli accompanied by the Chief Executive Officer of the Malta Tourism Authority Johann Buttigieg, visited the businesses along the Valletta Waterfront which like other outlets have started operating again in the last weeks with new systems and protocols in place. The Minister praised the way in which the management of the destination has turned a period of downtime into one which further strengthens the same business, whilst further improving the tourism product.

The new structures present an interplay between old and new, between function and context, with positive feedback about the simple lines and lightness that the new canopies afford in the venue's historical setting, whilst being practical for the everyday activities of a multipurpose destination.

The cruise industry has been hard-hit by COVID-19 but Valletta Cruise Port is expecting cruise calls starting in the next weeks.

MedCruise contact: Stephen Xuereb
sxuereb@vallettacruiseport.com



Port facilities & infrastructure

We asked MedCruise member ports and destinations if they were investing in new port/destination facilities and when they would be ready?

Piraeus

Started in February 2020, the Cruise terminal South Expansion project is on-going, a project with initial budget of €120 million, co-funded by the European Regional Development Fund. This project will allow Piraeus Port to host 2 new generation cruise ships of over 280mtr long, added to the already 11 berthing positions in place. The project is estimated to be completed by autumn 2022. The port is also studying the development of a new 'Premium Cruise terminal', dedicated to luxury cruise vessels up to 200mtr LOA and with a capacity of up to 500 passengers.

Chrysanthi Kamoulakou,
Strategic Planning & Marketing,
Piraeus Port Authority



Egyptian ports

Alexandria Port is renovating its Cruise Terminal, incorporating prominent elements of Alexandria's history over the decades. The design comprises Pharaonic architecture with features from the Roman era. The Cruise Terminal will be developed in 3 stages: senior visitors, the main part for tourists and restaurants. Security, safety and hospitality as well as high-quality services will all be delivered at international standards.

Karim Mohamed Mahmoud Youssef, Head of Cruise Department, Alexandria Port Authority

Port Authority of Western Sicilian Sea

In the port of Palermo, a temporary structure currently replaces the maritime station that is in the process of being renovated and will be completed within the year. Trapani's cruise terminal is being renovated too while in the port of Porto Empedocle a design for a small terminal has been completed. **Antonella Filippi,** Promotion and Communication, Port Authority of the Western Sicilian Sea

Azores

At the ports of the Azores, improvements are underway; Flores Island is undergoing a port reconstruction; On Terceira Island, the Port of Angra do Heroísmo is being redeveloped; and on São Miguel Island, the Commercial Pier is having improvements made.

André Velho Cabral, Cruise Manager, Portos dos Açores

Port System Authority of the Eastern Sicilian Sea Tarragona

An agreement has been made between CCT, the company managing the cruise terminal in the Port of Catania and the Port System Authority, to build a new cruise terminal. The new terminal (approximately 2,500sq mtr) will be fully equipped to perform up to 100% security controls. CCT is also organising a more comfortable area, different from the one used by in transit passengers, in which passengers will wait to be boarded and where they will embark, through security controls, and claim their luggage. **Ilaria Tomasi,** Marketing, Promotion & External Relations, Port System Authority of the Eastern Sicilian Sea

The Port of Tarragona is making steady progress in the construction of the Balears berth. The works on the pier, with a budget of more than 27M euros, officially began in April 2020 and will be completed within 14 months. This new infrastructure will substantially change the space of the Llevant pier for the berthing of cruise ships, as it will add an area of 4 hectares and 460mtr in length.

Alba Colet, Cruises Department, Tarragona Cruise Port

Souda/Chania

Souda Port Authority has continued with only slight delays on the development of the Master Plan focusing on cruise port infrastructure, namely the passenger terminal, which will provide a significant docking extension at Adrias Pier and a new passenger terminal with full facilities. With these additions the port will be able to serve all new generation mega cruise vessels, as well as luxury cruise vessels at the same time.

Stella Manioudaki, Executive Director, Souda Port

Port Authority of the Strait of Messina

The new Master Plan at Port of Messina provides a larger area devoted to cruising, equipped with high quality services and security systems. A new cruise terminal is under construction and due to be completed by end of 2021. Messina Port Authority also has jurisdiction over the harbour of Milazzo where it is planned to boost cruise activity. Here the total quays length is 1,700mtr and it will become 2,100mtr in the next few years.

Cristiana Laurà, Head of Institutional Affairs, Promotion and External Relations Unit, Port Authority of the Strait of Messina

Rijeka

The preparation of project documentation for a new project called South Berth is ongoing and the investment is estimated at around EUR 30M. The new pier would be a long-term solution for passenger ships, including ferry and cruise ships.

Rajko Jurman, Head of Commercial Department, Cruise Manager, Port of Rijeka Authority



Thessaloniki

The port is completing a study for dredging the area next to the cruise quay. The operating depth is expected to reach 10mtr. Additionally, new fenders and bollards will also be installed.

Evgenia Traikapi, Public Relations & Corporate Social Responsibility Office, Port of Thessaloniki

Port Network Authority of the Ionian Sea – Port of Taranto

Currently works are in progress on the East Side of the st. Cataldo Pier in order to renovate the Pier, enlarge the quay thus allowing new berthing points. The works aim at improving the infrastructure and making it suitable for cruise ship mooring. It is due to be completed in August.

The new Multipurpose Service Center, currently under construction, will be dedicated to cruise-related activities, among which a passenger terminal to welcome and accommodate cruise travellers visiting the Taranto.

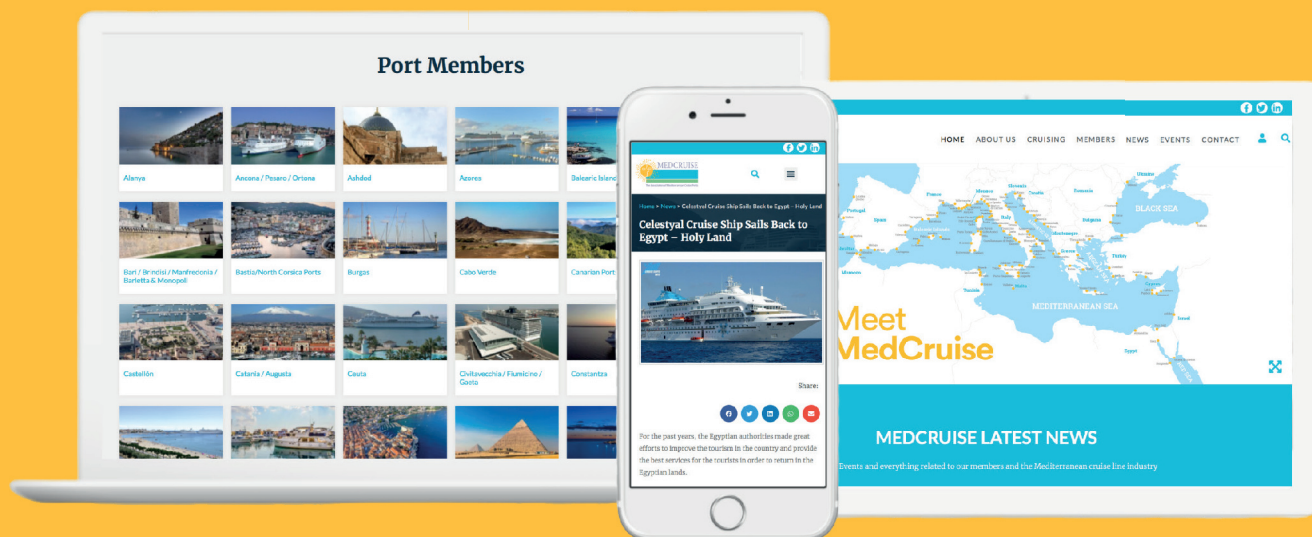
Cristina Carriere, Promotion and Marketing Department, Port Network Authority of the Ionian Sea

Tangier

Among the latest achievements are; the Port Center square which is located at the exit of the maritime station. Other renovations of streets and old buildings in the old city of Tangier (Médina) to highlight the rich city's history. All the spaces at the foot of the old walls have been completely redone with gardens, paths, parking lots and lighting, plus work has begun on the creation of a museum dedicated to Ibn Battuta.

Jamil Ouazzani, Director of Marketing & Strategic Intelligence, Tangier City Port Management Company

Meet MedCruise



Meet Our Team

Left to Right

Jordi Caballé
Secretary General

Anja Lohrum
Secretariat Advisor

Sara Valls
Secretariat Advisor

Airam Diaz Pastor
MedCruise President



MedCruise Association
Ed. Puerto-Ciudad,
5-B Santa Cruz de Tenerife

+34 922 53 33 83
secretariat@medcruise.com

www.medcruise.com
www.medcruise.cn